

## Yi Xing Red $\Delta 6$

### Recipe:

OM-4 - 40

Redart - 60

+ Barium Carbonate - 0.5

### Notes:

One of Richard Notkin's Yi Xing clay bodies. Good for small wares – shrinks a lot.



## Alfred Gold $\Delta 6$

### Recipe:

Alfred Clay\* - 50%

Goldart - 50

+Barium Carbonate - 0.5

### Notes:

Sourced and processed in Alfred, NY. We collected a few hundred pounds of clay from the foundation of the Alfred Ceramic Art Museum during its construction. It was not very plastic, Goldart was added which made it a nice mid-range throwing body.



## Necroterrene Δ5

### Recipe:

Lizella - 34

EPK - 33

Alberta Slip Sub - 33

+ Fine Grog - 10

+ Granular Manganese 20M - 10

+ Cobalt Oxide - 1

### Notes:

Experimental black clay body. Very narrow firing range. It would probably make a better slip than a clay body.



## White Lightning Δ10

### Recipe:

New Zealand Kaolin - 25

Super Standard Porcelain - 25

Mahavir - 20

Nepheline Syenite - 10

Silica - 20

+ Molochite 200 - 15

+ Bentolite - 4

+ Paper Pulp - 1

### Notes:

Experimental super white porcelain paper clay for small objects. Consider substituting with toilet paper if Paper Pulp is not available.





## Dark Cushing $\Delta 10$

\*Revised from Val Cushing's Handbook.

### Recipe:

OM-4 - 12

Goldart - 32

Hawthorn Bond 50mesh - 32

Custer Feldspar - 10

Lizella - 6

Barnard Slip Sub - 4

Alumina Oxide - 4



## Alfred Shale $\Delta 1$

### Recipe:

Alfred Shale\* - 100

+Barium Carbonate - 0.5

### Notes:

Sourced and processed in Alfred, NY. Shale was collected from the banks of Canacadea Creek and then crushed and hammer milled at Alfred University.



## Strawberry Shortcake $\Delta 10$

### Recipe:

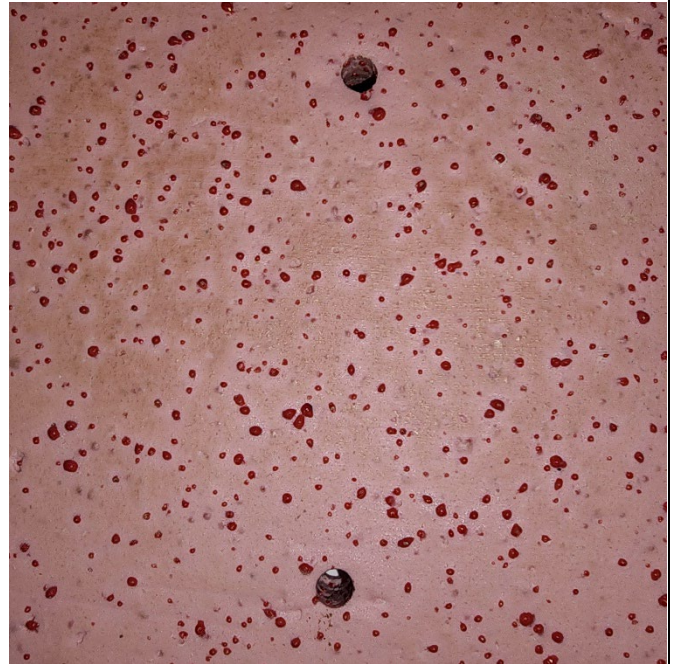
Grolleg - 50  
Flint - 25  
Mahavir - 25  
+Veegum - 1  
+Mason Pink Stain #6020 - 6.66  
+Red Grog\* - 6

### Red Grog Recipe:

Minspar - 86.5  
Ferro 3195 - 4.5  
Veegum - 9  
Mason Dark Red Stain #6021 - 7

### Notes:

The grog recipe was prepared and cast into plaster block molds, fired to cone 1, and crushed to 16 mesh.



## Purple Ray $\Delta 10$

Purple Colored Porcelain

### Recipe:

Grolleg - 55.50  
Custer Feldspar - 18.5  
Flint - 15  
Pyrax - 5  
Molochite 200M - 3  
+Bentonite - 3  
+Mason Dark Red #6021 - 5.25  
+Mason Wedgewood #6310 - 5.25





## Sugar Rocky $\Delta 10$

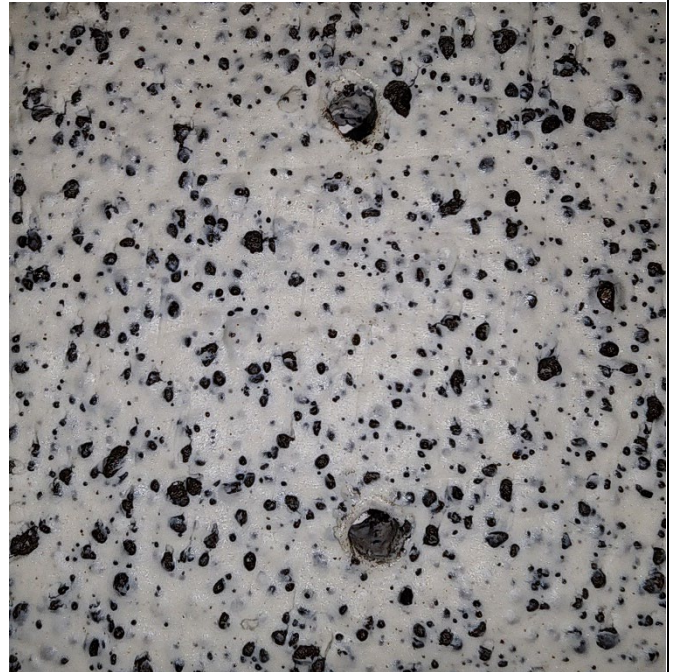
### Recipe:

Grolleg - 50  
Custer - 25  
Silica - 25  
+ Veegum - 2  
+ BentoLite L10 - 2  
+ CTCC Roof Tile Grog - 15

### Grog Details:

Crushed Celadon Terra Cotta  
Company Roof Tiles made from Alfred  
Shale. Very coarse, begins melting  
around  $\Delta 6$

**Must fire on sand!**



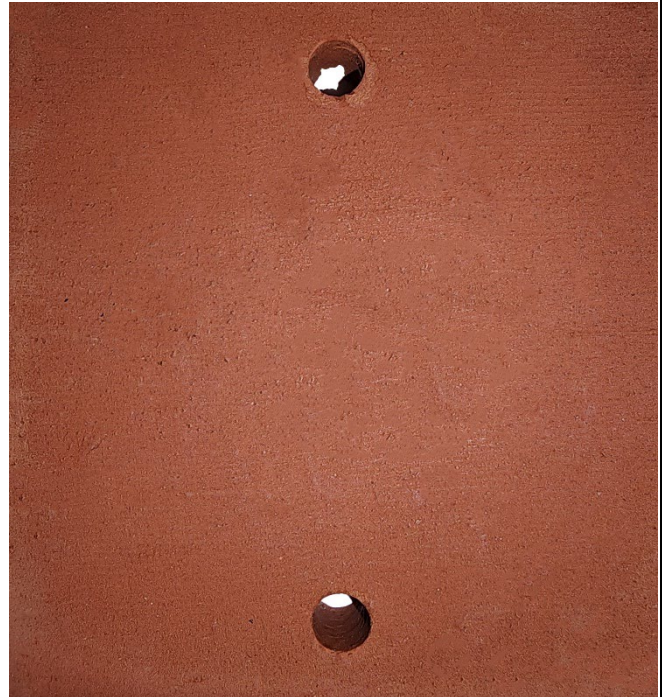
## Red Rover $\Delta 04-1$

### Recipe:

Newman Red Clay - 32.3  
Talc - 23.1  
Yellow Iron Oxide - 19.4  
Silica - 11.9  
Whiting - 9.2  
+Bentonite 4

### Clay Details:

Designed to mimic the chemistry of  
Martian soil samples as analyzed by  
NASA.



## Chocolate Bloom $\Delta 6-8$

### Body Recipe:

Lizella - 50

EPK - 18

Spinks Blend Ball Clay - 15

Hawthorn Bond 50mesh - 10

Minspar - 7

+Bentonite - 2

+Manganese Dioxide - 6

+White Grog - 10

### White Grog Recipe:

Silica - 37.7

EPK - 30.2

Ferro 3134 - 15.2

Minspar - 10.75

Whiting - 6.15

+ Zircopax - 10

### Clay Details:

**Must fire on sand!**



## Cup 'O Joe $\Delta 5-8$

### Recipe:

Sheffield Slip - 30

Pyrax - 20

Tennessee #10 - 15

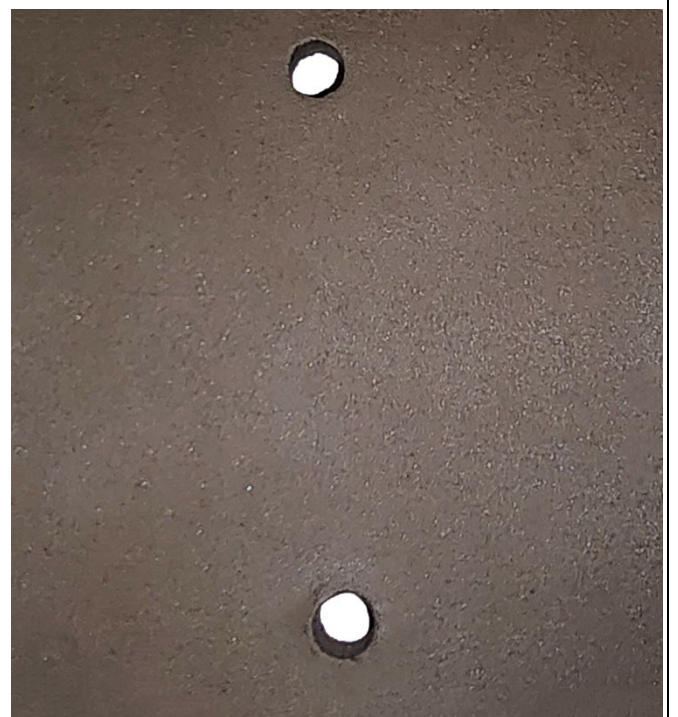
G200 - 15

Foundry Hill Crème - 10

Greenstripe Fire Clay - 10

### Notes:

Smooth, dense, vitreous body for throwing and handbuilding.





## Senior Ditch Clay $\Delta 6-10$

### Recipe:

Porcelain Reclaim - 100  
+Blue/Grey Porcelain Grog - 25  
+Reclaimed Porcelain Slip - 25

### Notes:

Hand selected reclaimed Porcelain from Senior Studios Spring 2023. Grog made from stained porcelain, fired crushed and screened.



## Dog Glaze of Summer

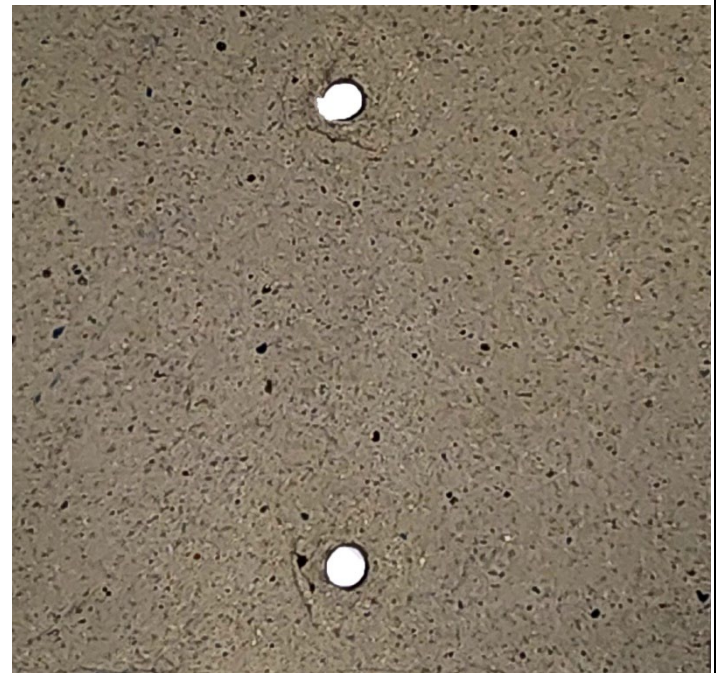
### $\Delta 6-7$

### Recipe:

Tile 6 Kaolin - 30  
Lincoln Fireclay - 30  
Old Hickory #5 Ball Clay - 15  
Quartzite (local material) - 15  
Scrap Glaze Sludge (sg= 1.7) - 75

### Notes:

Demonstration stoneware clay,  
Reclaimed glaze is used to supply  
water and flux for clay.



**Photos unavailable**

## V.C. 66Δ10

**Recipe:**

Grolleg - 50  
G-200 HP - 25  
Silica - 25  
+ Veegum - 3  
+ Val Cushing Glaze Grog\* - 5

**Notes:**

**Must fire on sand!**

The glaze grog is a combination of all the cone 10 glaze recipes from the third edition of Cushing's Handbook

## Microblue 2 Δ10

**Recipe:**

Grolleg - 56  
Custer Feldspar - 18  
Silica - 15  
Pyrax - 5  
Molochite 200mesh - 3  
+Bentonite - 3  
+ Mason Dark Teal #6371 - 25

**Notes:**

Designed to introduce color into another clay body. Mix a small batch and then wedge it into white porcelain.

## Microblue Δ10

We used CC 1525 – Mason 6371 is possible sub.

**Recipe:**

Tile 6 - 45  
Tennessee #10 - 10  
Mahavir Feldspar - 25  
Blue Ceramic Stain\* - 20  
+Molochite 80 - 5  
+Molochite 120 - 5  
+Bentonite - 2

**Notes:**

Designed to introduce color into another clay body. Mix a small batch and then wedge it into white porcelain.