

Artifacts of Val Cushing's Studio Pottery

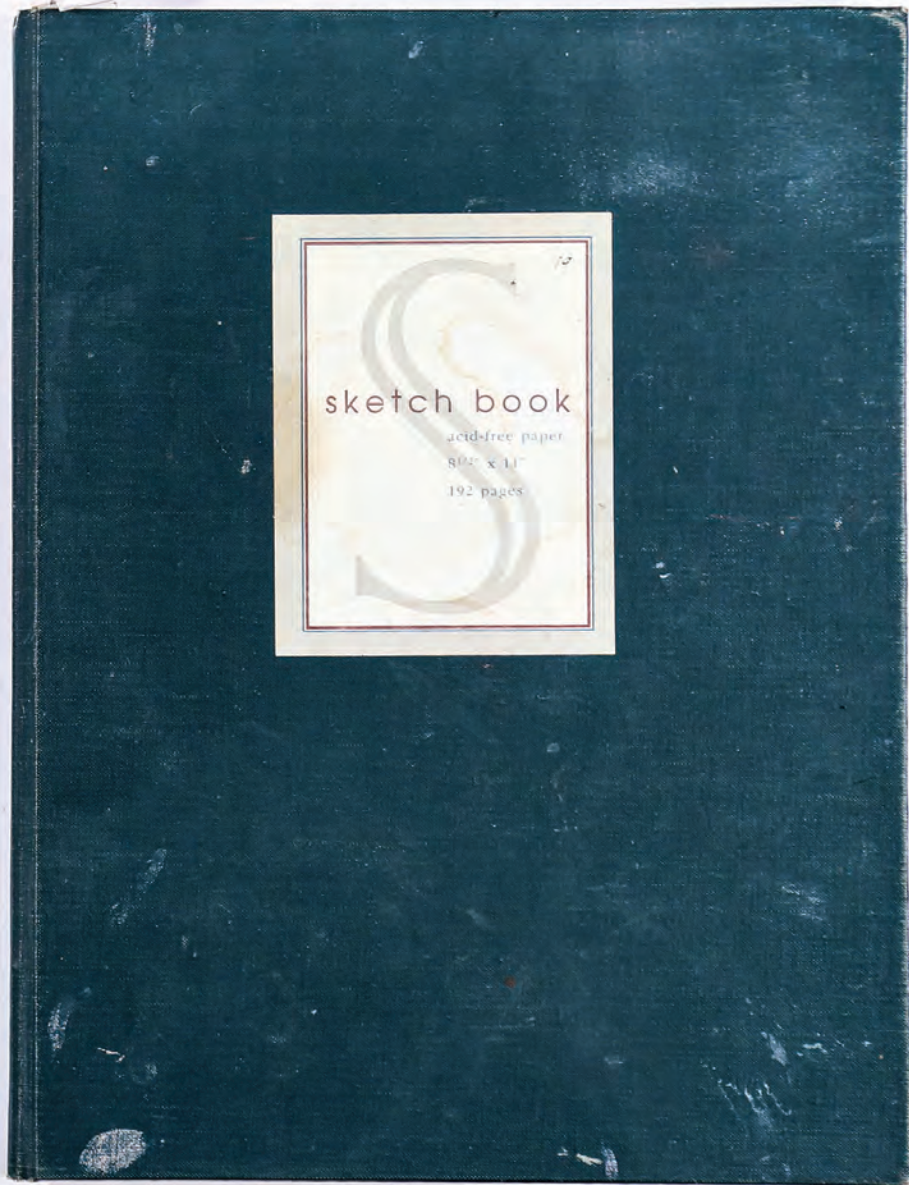
2 of 5: Dark Teal Notebook

A collection of notebooks and tools from the studio practice of Val Cushing; these objects are documented as record of their exhibition at Scholes Library at Alfred University in 2019.

The exhibit showcased Grinding Room glaze research that was completed with the intention of creating a series of documents to augment the resources provided in the "Cushing's Handbook." These Visual Companions and other technical resources are available through:

alfredgrindingroom.com

Made possible by Elsie and Eric Cushing's generous loan of Val's personal belongings.



sketch book

acid-free paper

8 1/2" x 11"

192 pages

Small grapes with the same colors of many, as well as to
line given -



very slight, pale, overpass on a satin, velvety white (VCT)
surface

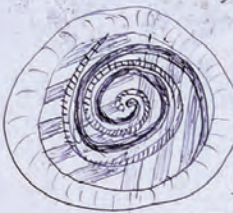
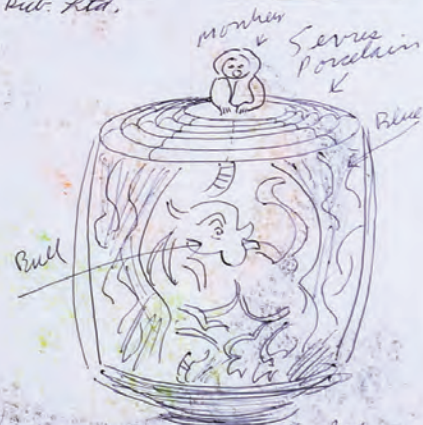
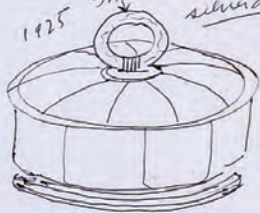




The Encyclopedia of
Decorative Styles
1850 - 1955

W.M. Hardy, Steven Adams, Arie Van De Lemme
Published by -- New Burlington Books, A Quintet Book
Quintet Pub. Ltd.

JARDINIÈRES ?
1925
TAPET
silverdish



- incised & raised
- Casholles
VI, L, M, S
 - Canister jar
Group VI, L, M, S.
 - Tea pots
L, M, S.
 - Pitchers
L, M, S
 - MUGS
12, semi base
4 lips mugs

Casseroles sm. / med / large

Storage pots " \ " \ " \

Pitchers " / " / " /




Tea pots " / "

Mug straws
tumblers

Demijohn
cup & saucers?



Platters &
serving
trays  etc.

Plates lunch, sandwich 
regular  

Bowls = pasta, desert, cereal & soup -
large - footed - punch & cups -

Candle sticks

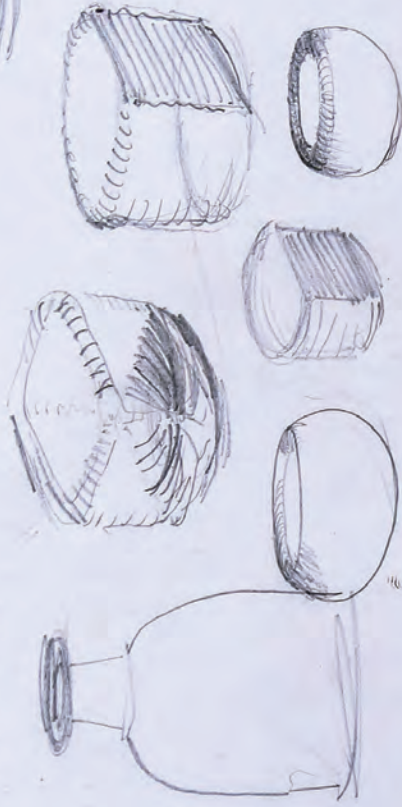
Wall tiles - kerastine
Nainburg -



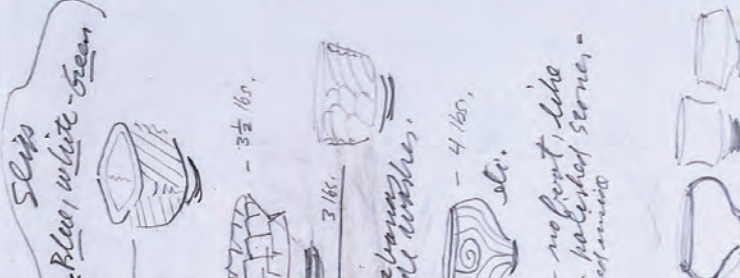
1. Content dictates form & style
 Stephen Southern

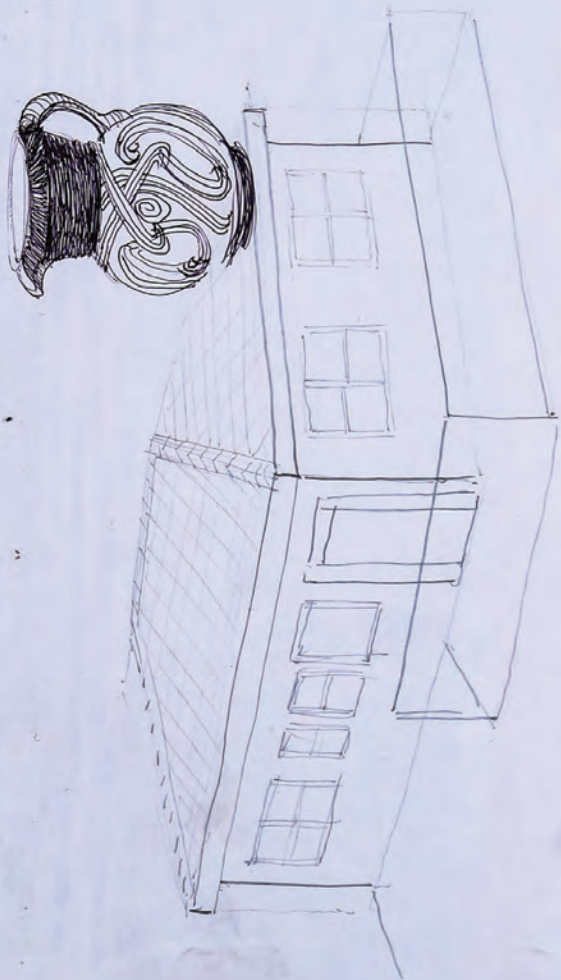
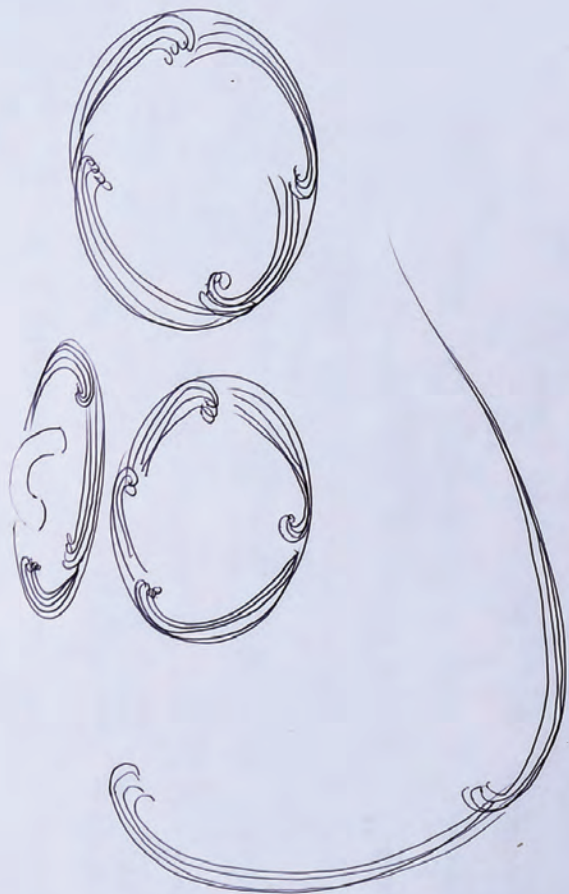
2. Less is more.

3.



- 10 Bowls - wet combed - 3 lbs.
- 10 Bowls - slip painted $3\frac{1}{2}$ lbs.
- 10 Bowls - square & combed 3 lbs.
- 10 Bowls - dimpled - 3 lbs.
- 10 Bowls - cut and patched - $3\frac{1}{2}$ lbs.
- 10 Bowls - finger painted slurry some
- 10 Bowls - 4 lbs. Islamic ruins - 5 color bands for oxide washes.
- 10 Bowls - combed thru slip 5 g. slip - 4 lbs.
- 10 Bowls - (thick, round) Stone bowls. $4\frac{1}{2}$ lbs. - no feet, like palestine Stone, - raised rim
- 10 Bowls - push onto - 4 lbs.
- 10 Bowls - bell form - for glass slip 4 lbs.











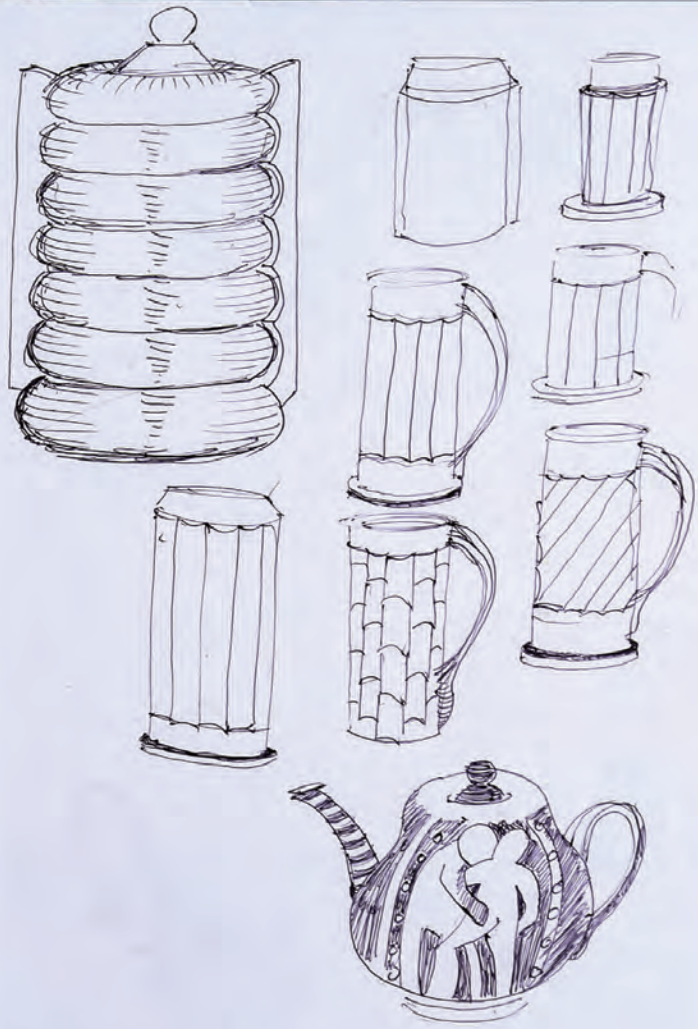
1/2 -
Agnes sent this
down to me
- R

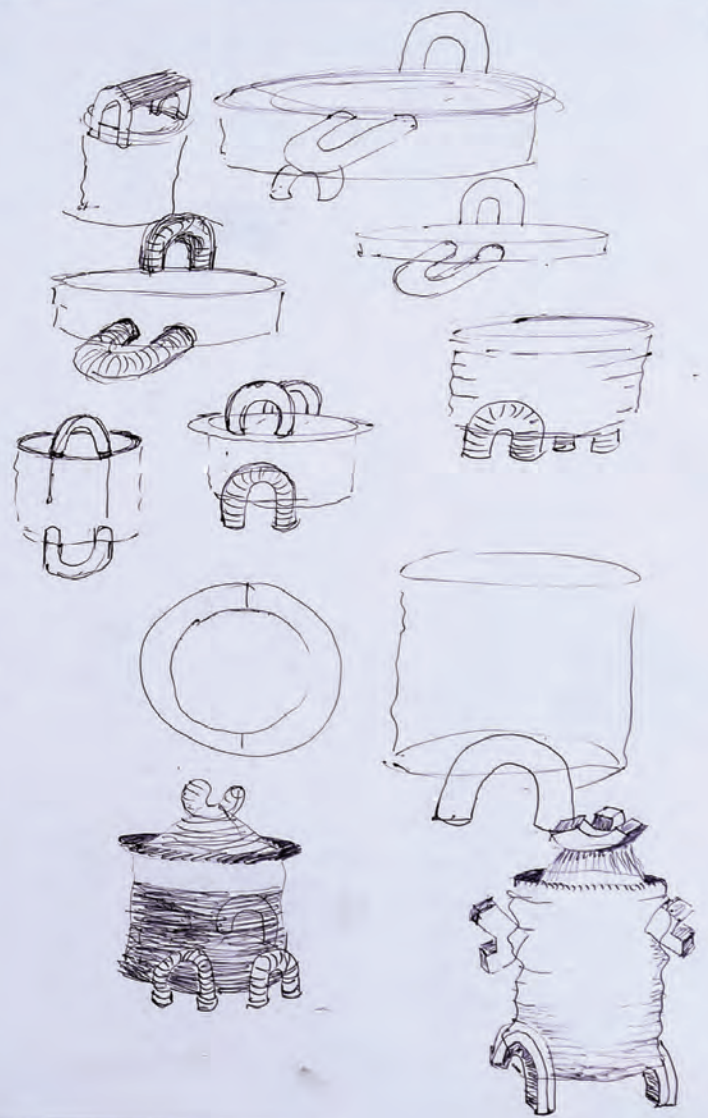
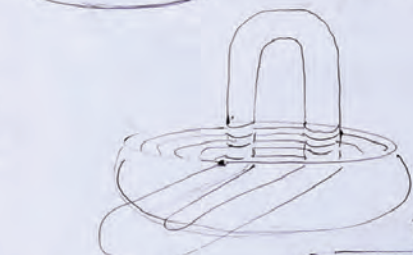
INTER-OFFICE MEMORANDUM
N. Y. S. COLLEGE OF CERAMICS
ALFRED UNIVERSITY

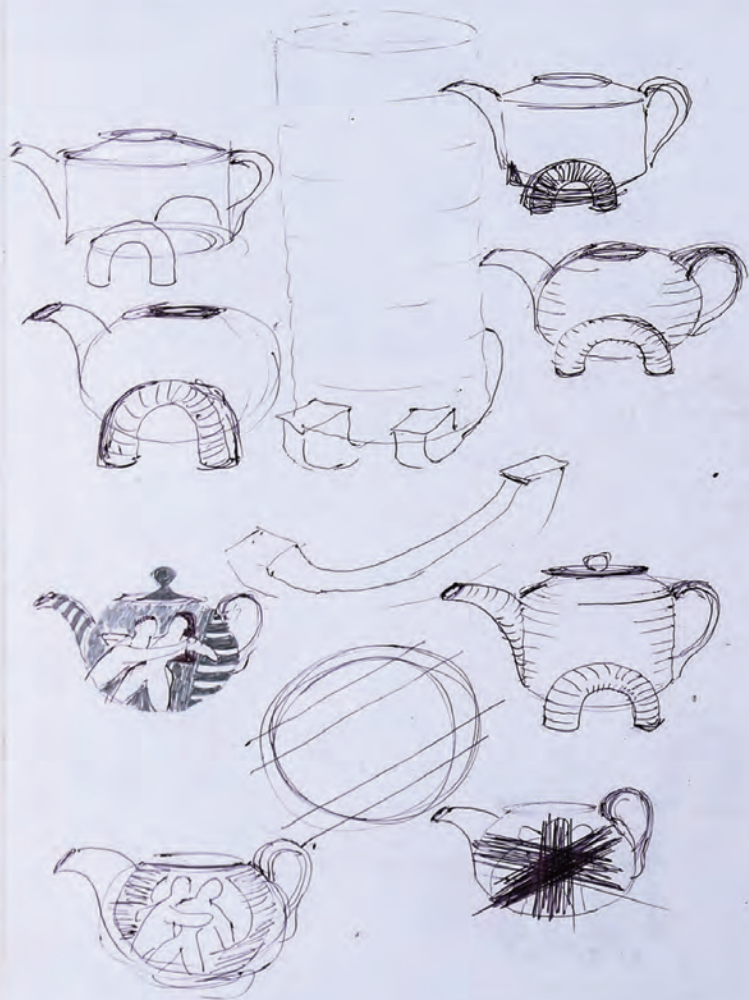
TO
FROM

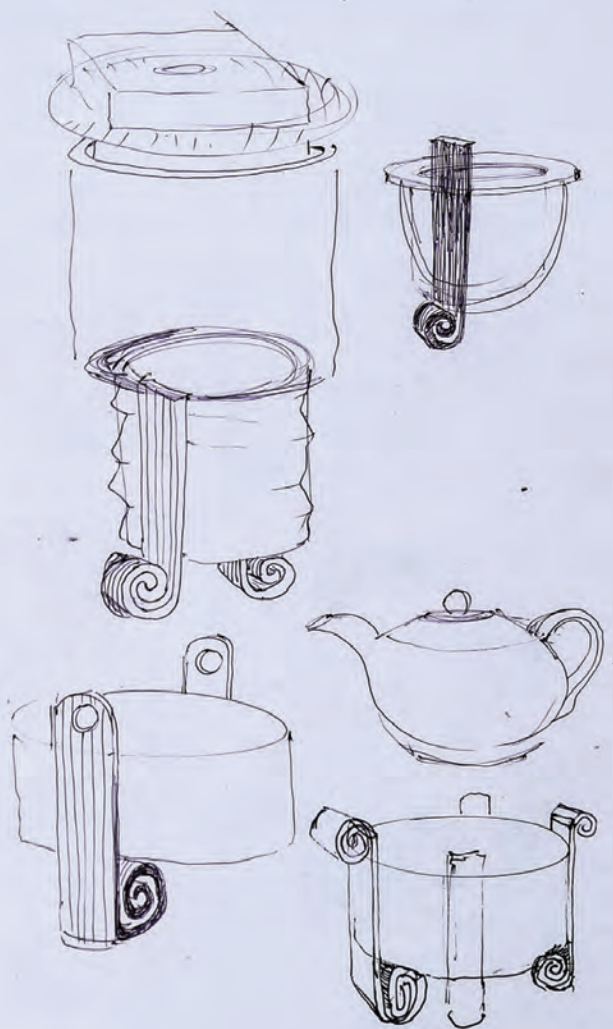
DATE
RE

To show that he was in favor of
women's lib, a man told Bot James that
if he & his wife were in their bedroom
& they heard a suspicious noise downstairs,
he would ^{gladly} let his wife go down and
comprehend the burglar.



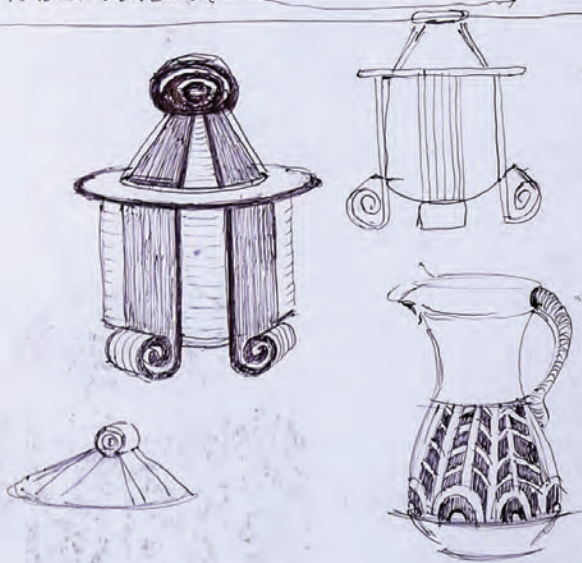




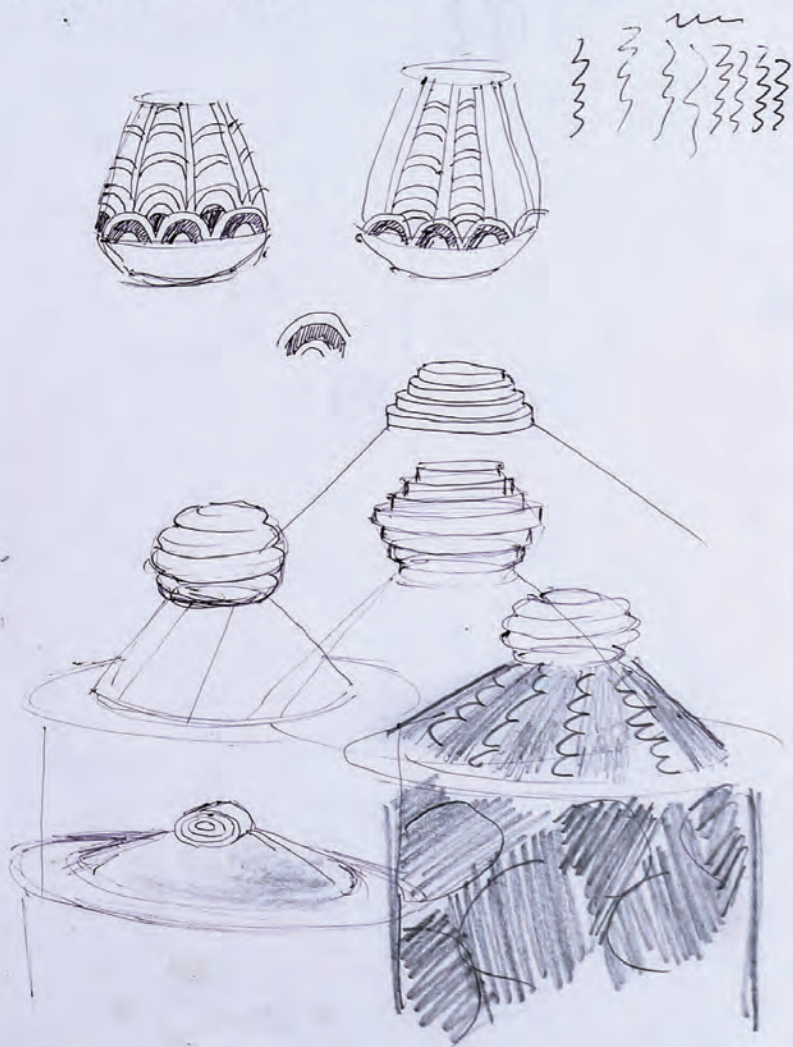


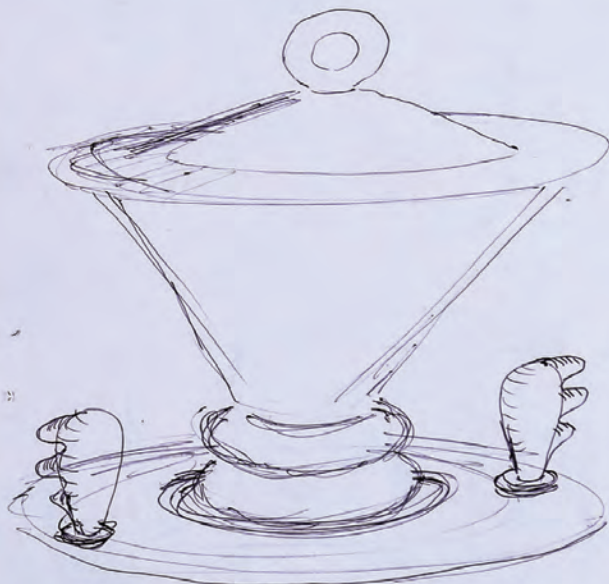
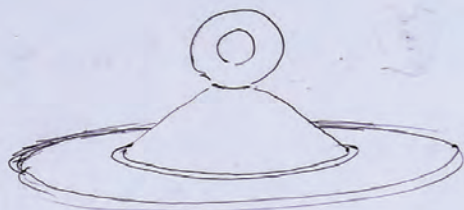
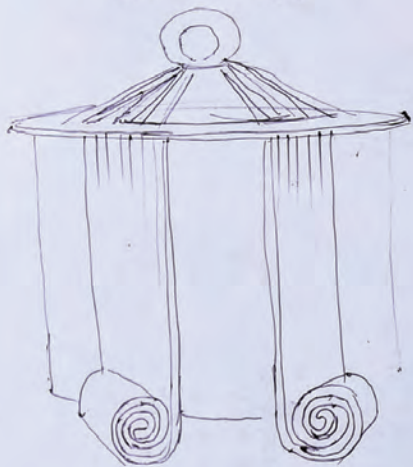
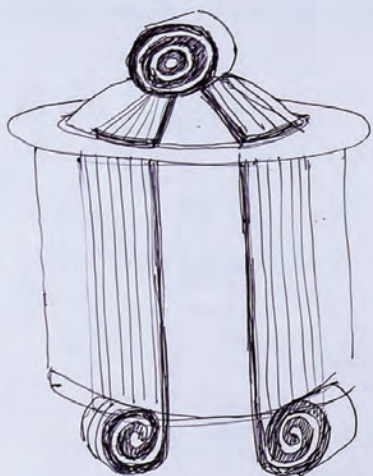
Paville yellow (calced) Bone sh - 40 ^{9/9-10 R}
 Dolomite - 30
 Cornwall Stone - 20
 Neph Sy. — 10
 + Rutile — 3 %
 Bentonite — 2 %

Tennahua type - K-200 feldspar - 40 ^{9/9-10 R}
 with silver spots
 on black ---
 Flint - 33 32
 magnesium carb. - 9 10 10
 whitening ----- 7.5 10
 Galleys Rasin - 8.5 8 8
 100.0 100
 + 10% red iron oxide



* Carrie - cell: 773-771-4611 *





Kuang -

amboul?



Lee Palkwin



Mario



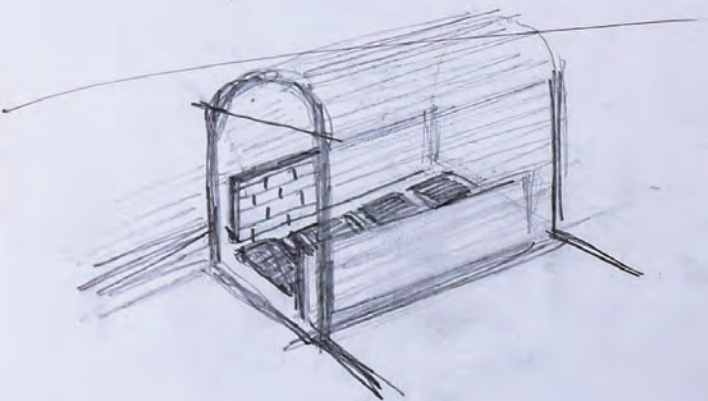
Dill hang



NO -



Elvi

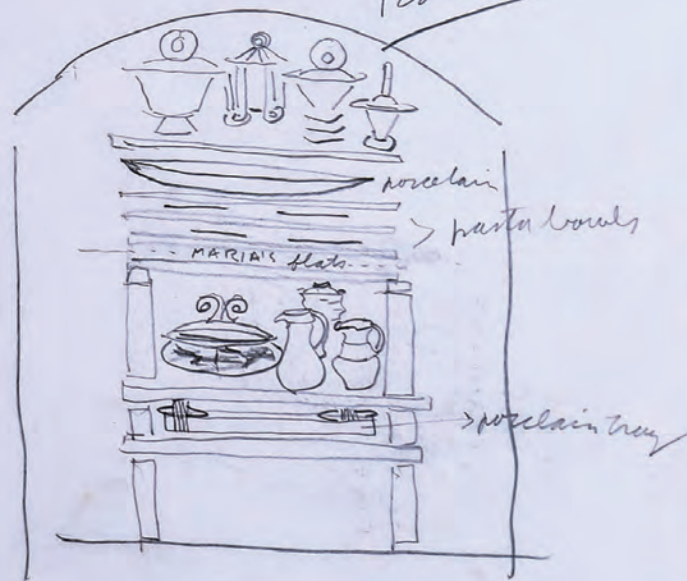


20" Front



extra lids
2 trays
casseroles tea pots

Back



porcelain
pasta bowls

MARIA'S flats

porcelain tray

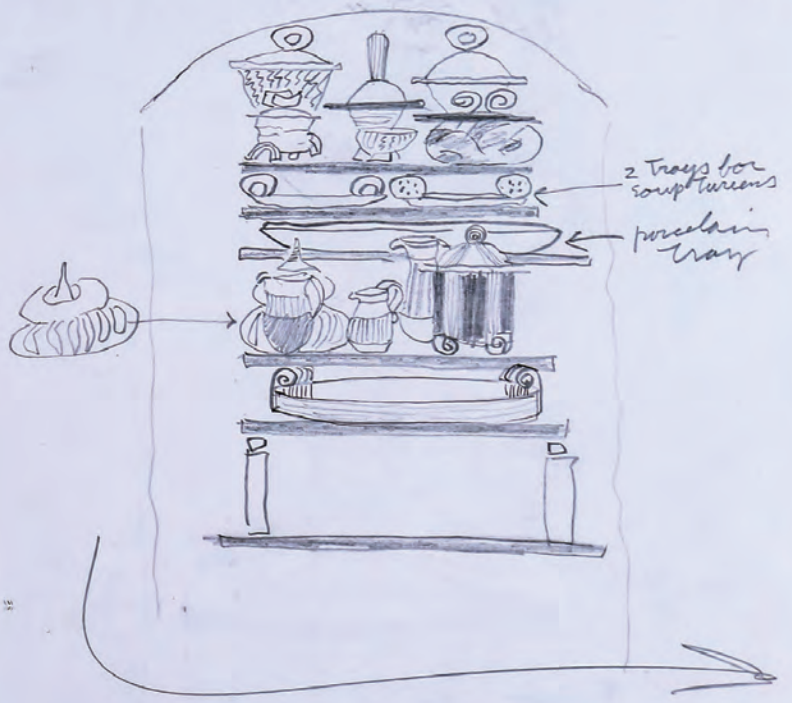
*Leadless
metal dome*



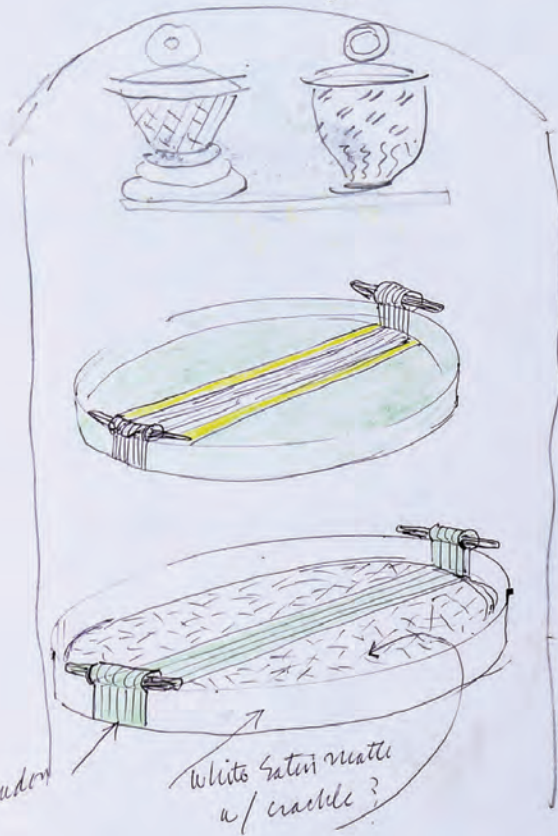
20
15
5
10
53
7
60



Back lounge Shack - "Regis master's" show 1/24/06



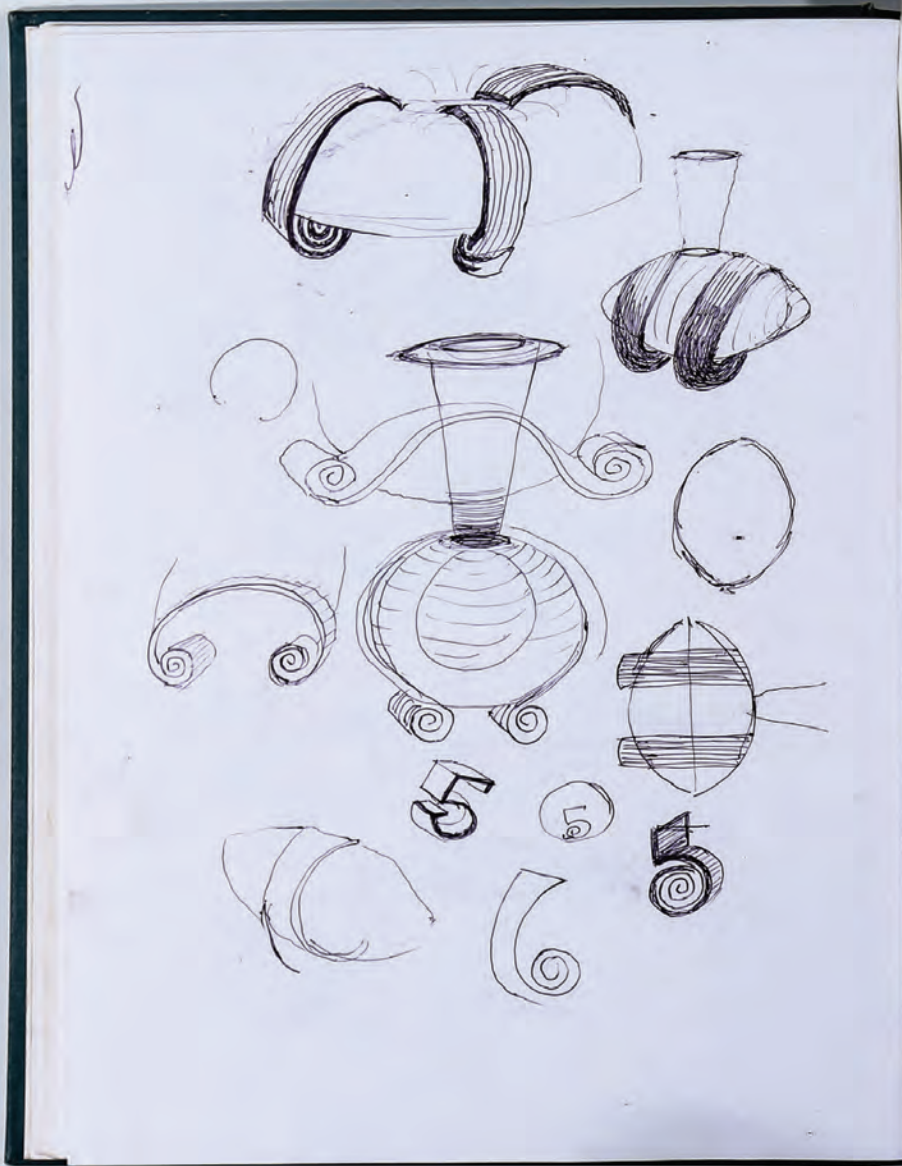
front

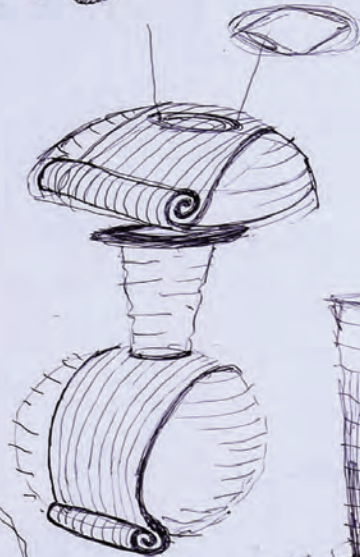
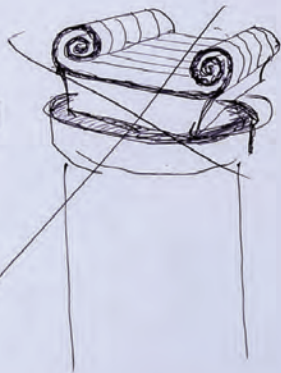
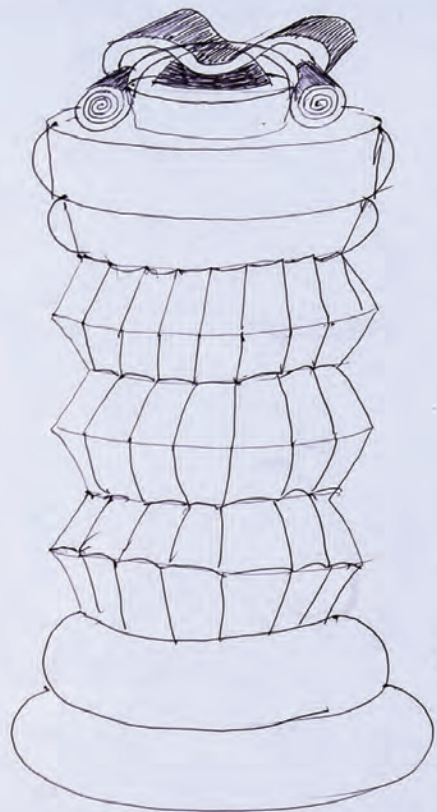


Celadon

white satin matt
w/ crackle?







AA Blue
 AA Green
 AA Revised
 Hennessy Blue
 apple ash
 amber Celadon
 Harder Celadon
 Tennoku
 Rimulet

mango lavender
 LP matte
 VCT satin white
 Brandy
 Satin Black
 1/2/3/4 - Glossy White

Glossy pale emerald (or.)
 * copper red *

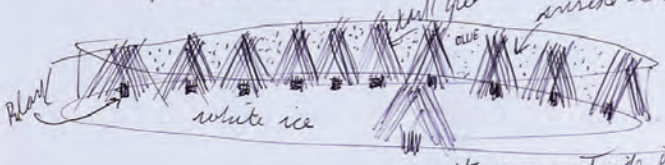
↑ "porcelain" possibilities ↑

other

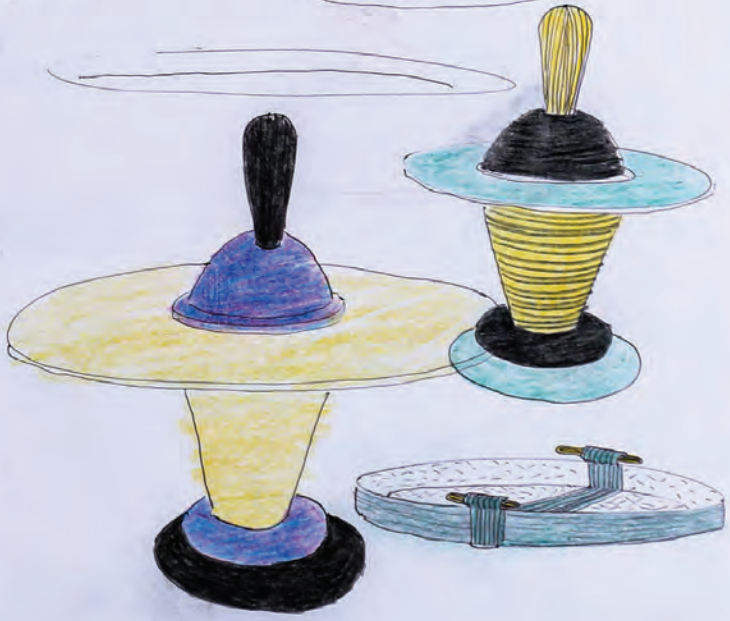
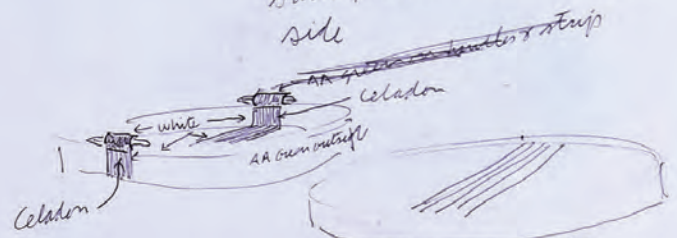
Woo yellow
 Rich matte Blue
 Revised/MAM
 mango w/fin
 Vichi Green
 Spodumene
 Satin Jade
 mixture linen
 Porcelain Shino
 Shamo -

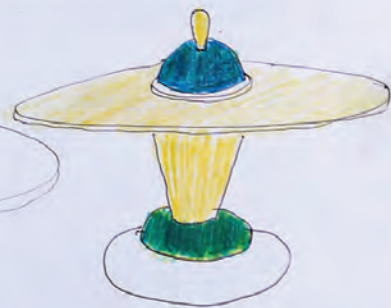
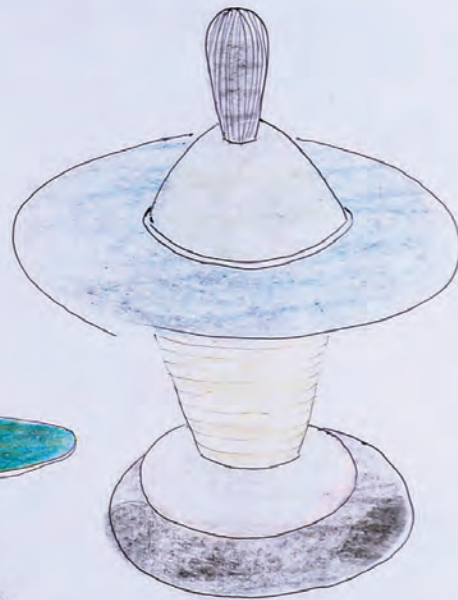


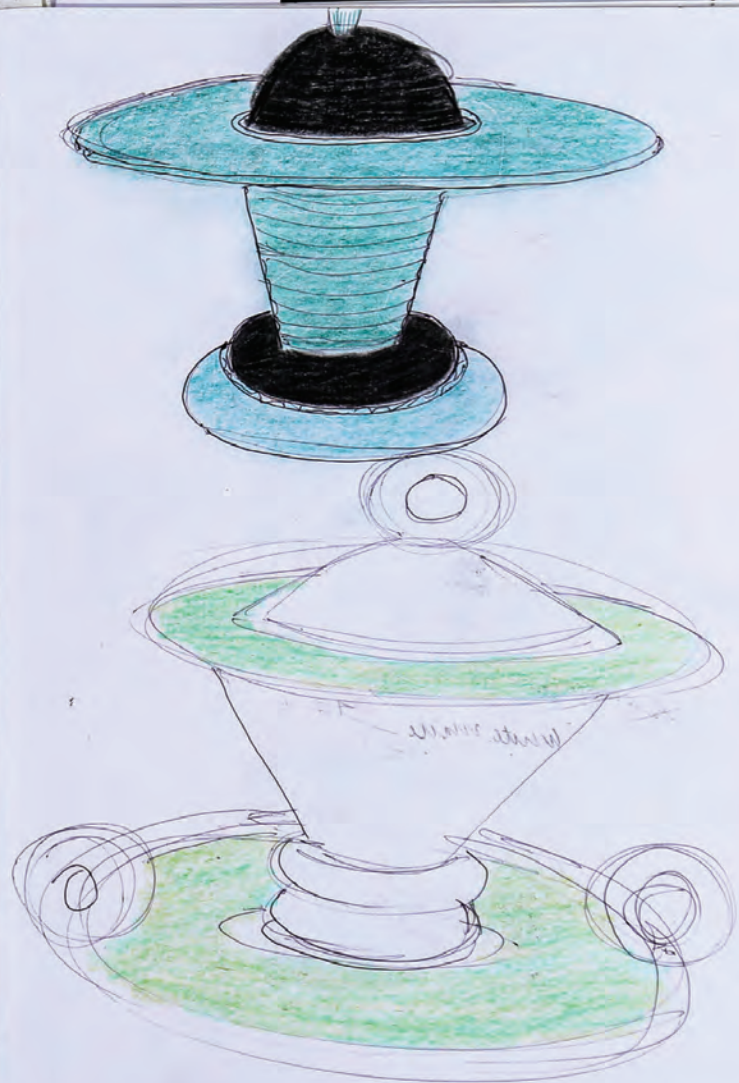
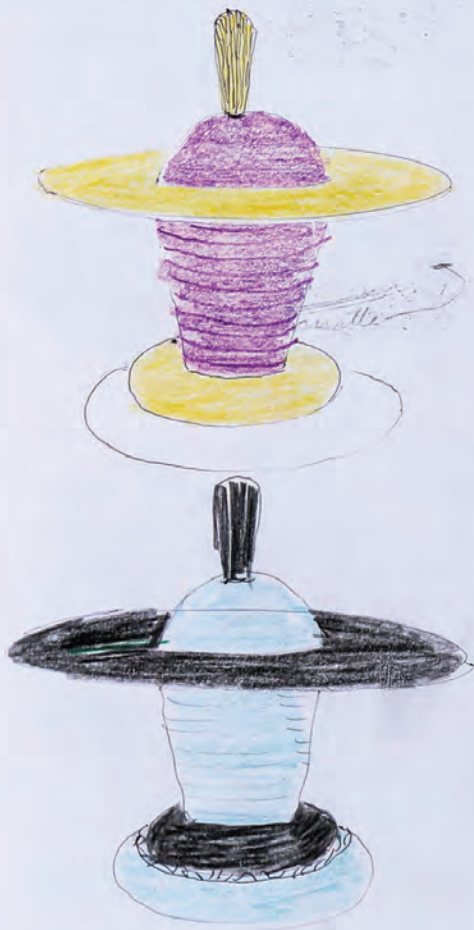
Foster's Lake

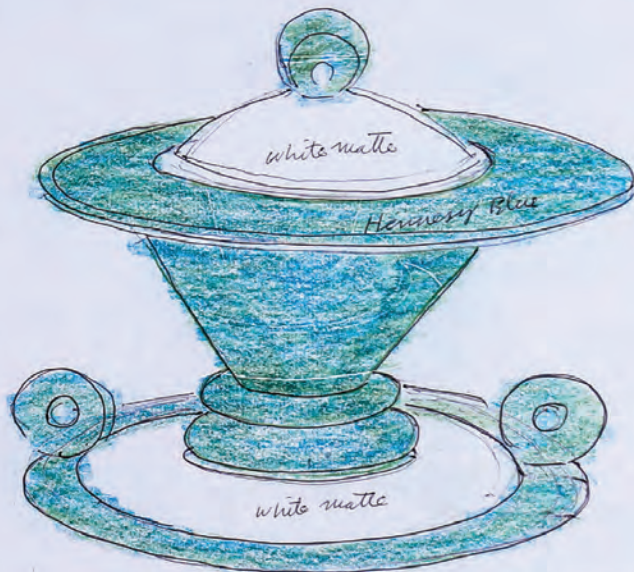
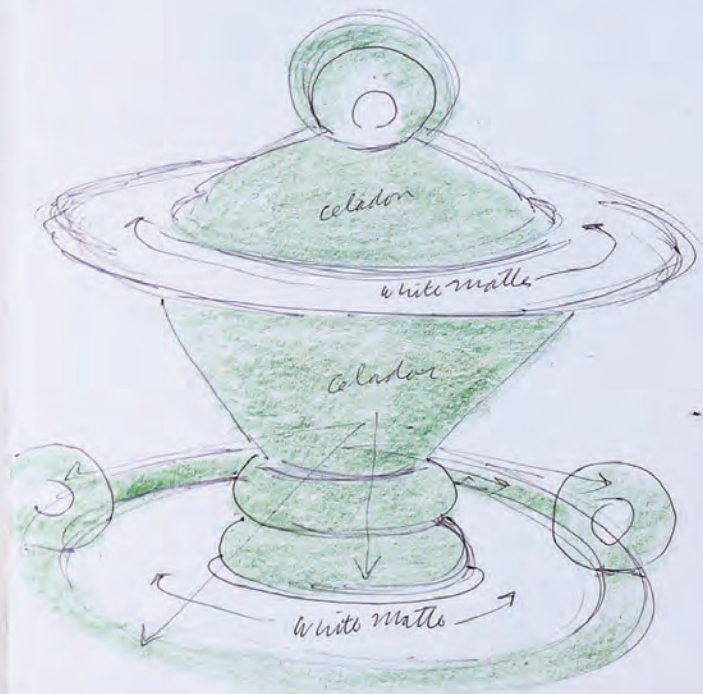


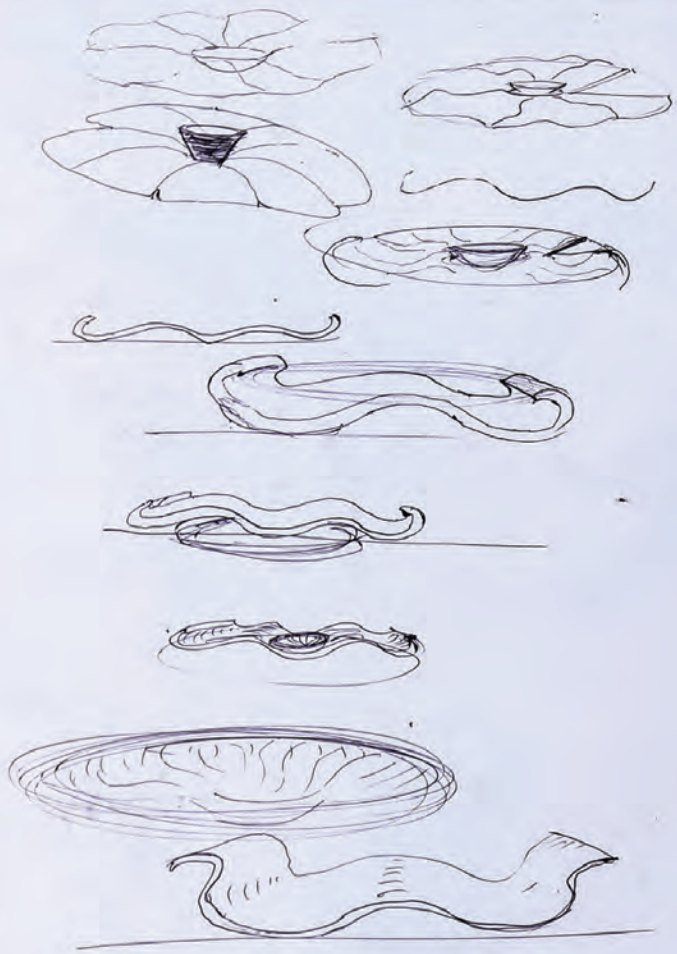
same pattern on outside of this side













VO Black, satin, velvet matte for C/6 OX. (or
(revised down, from @metablack C/4-10 R

Kona 1/4 spar - 20
Frit #3124 (ferro) - 20 (*)
Dolomite - 15
Talc - 12
Whiting - 2
Ball clay - 9
Flint - 22

(used in Minneapolis
by Maria Klossman?
(Maren)
she sent many sp
her pots (tile?)

+ red iron ox. - 3%
cobalt ox. - 3%
manganese dioxide - 2%
chrome oxide - 1%

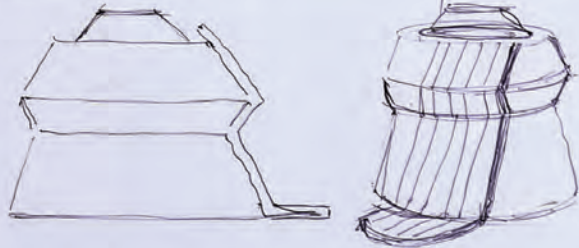
C/04 Black, rich matte

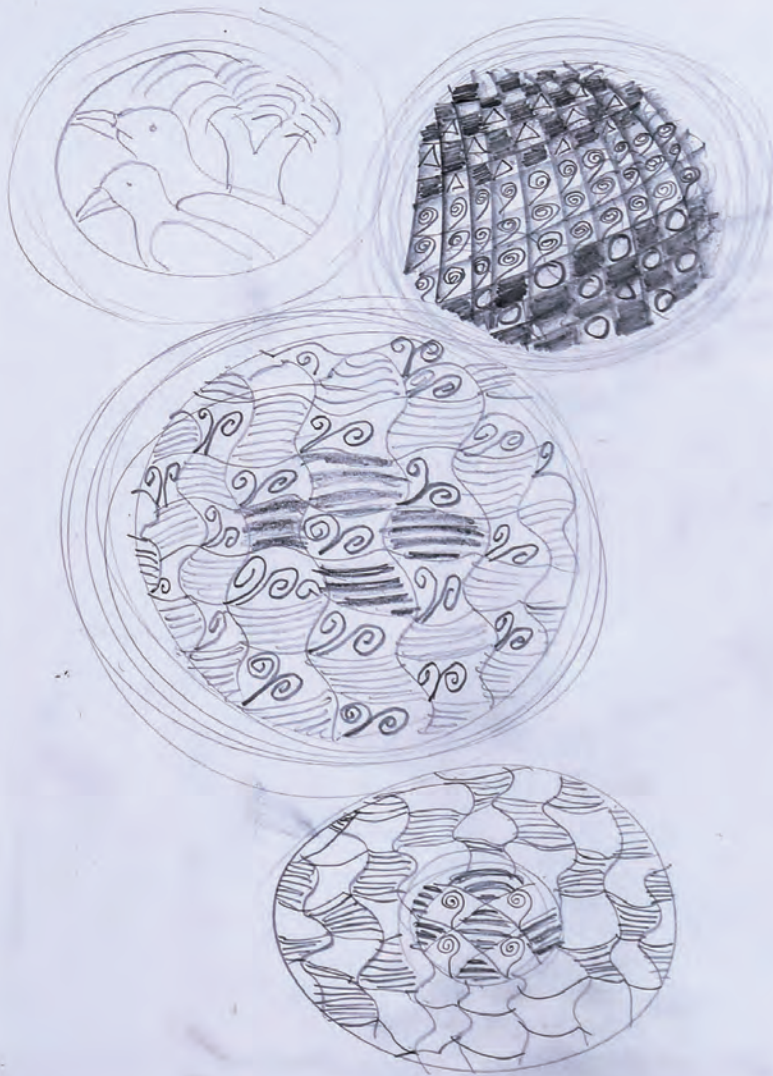
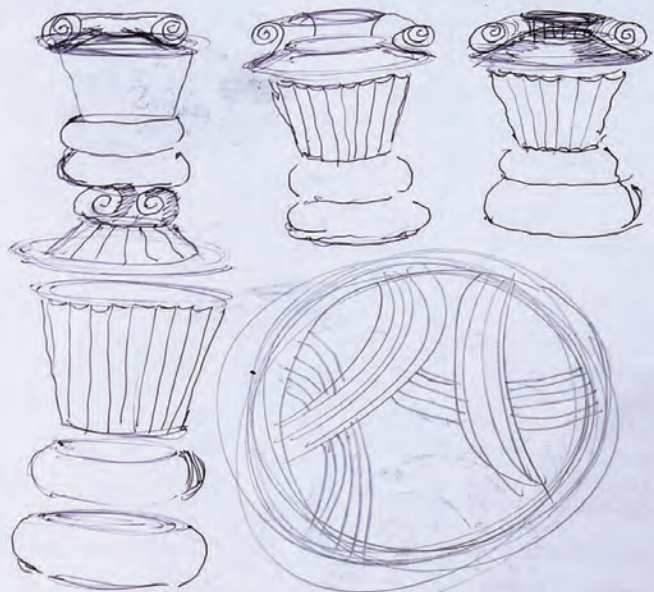
Gerrity Proxate - 50
Frit # 3124 - 4
Lithium carbonate - 8
EPK - 12
magnesium carb. - 4
Flint - 22

C/04 Porcelain slip

EPK - 5
tile #1 - 10
Gralox - 5
Ferro frit #3124 - 50
Talc - 10
Flint - 25
Zirconium - 15
100
whit...
add stains @ 15%

100
either mason's black - 8% (10%)
#6600









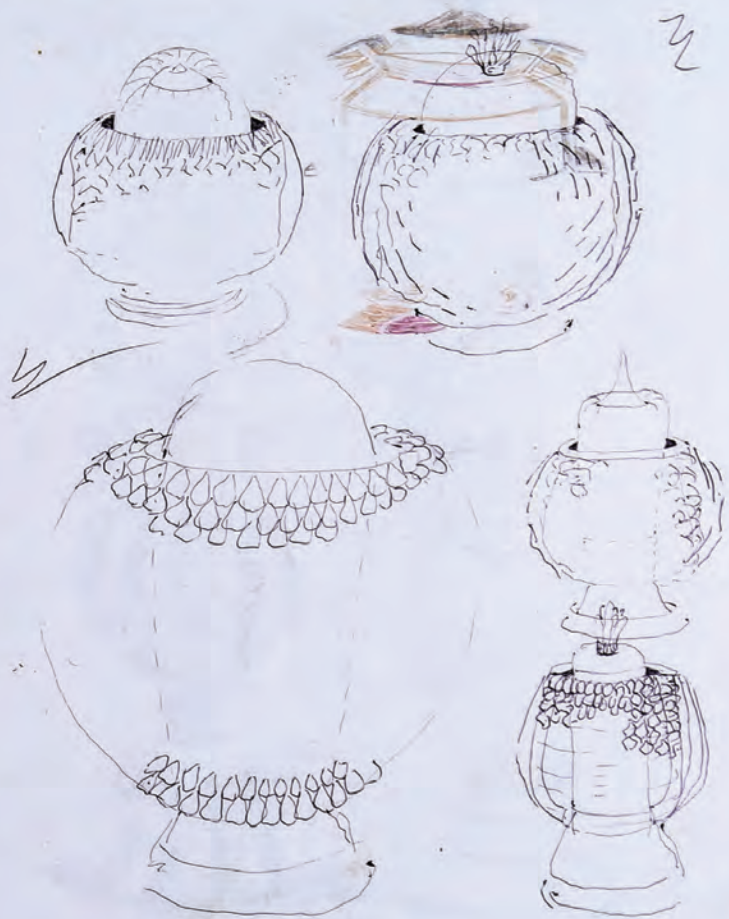
① RT. 38 up 401, take 38 N.
 several small towns - Sharbot Lake village to for
 table: Crow Lake Rd. ... no thru village, one shop
^{so. straight}
~~RR tracks~~ 3.4 miles, turn right off that rd.,
Cedar Haven camp, turn right 2 miles
 bear left on main road, farm yard - "Badour farm"
 go thru 2 gates... close them, across field -
partridge lane, bear right, another fork bear
 right, pass a couple of cottages - {#83 green sign, white letters
 & red garden veggies --- charcoal-}

1 → 613-279-2774

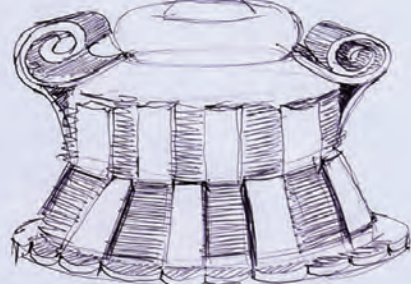
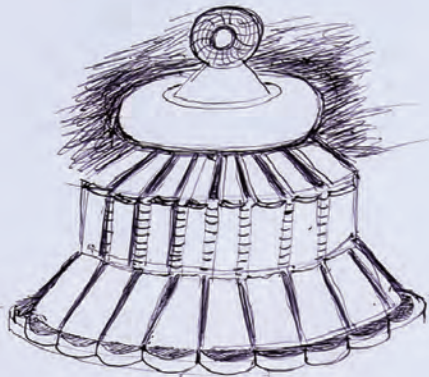
- 1) Thousand Island bridge, to #HWY. 401 West.
 - 2) Exit #401 @ RTE. #38 North (EXIT # → #11)
 - 3) Go thru several small towns - you come to a sign for Sharbot Lake
 don't go there! Take CROW LAKE RD. go through village
 (one store!) GO STRAIGHT thru.
 - 4) Go 3 or 4 miles and turn RIGHT off the road you are on -
 - 5) @ Cedar Haven camp turn right, go about 2 miles
 - 6) Bear left on the main road, you will see a farm yard
BADOUR FARM.
 - 7) Go through 2 gates, as you go across a field. (close gates after you).
 - 8) at PARTRIDGE LANE bear right - you come to another
 fork & bear right again, you will pass a couple of
 cottages look for #83, green sign with white letters
- * Phone 1-613-279-2774 *



Handwritten scribbles and symbols, including a pink squiggle and a black squiggle.



Handwritten squiggle symbol.



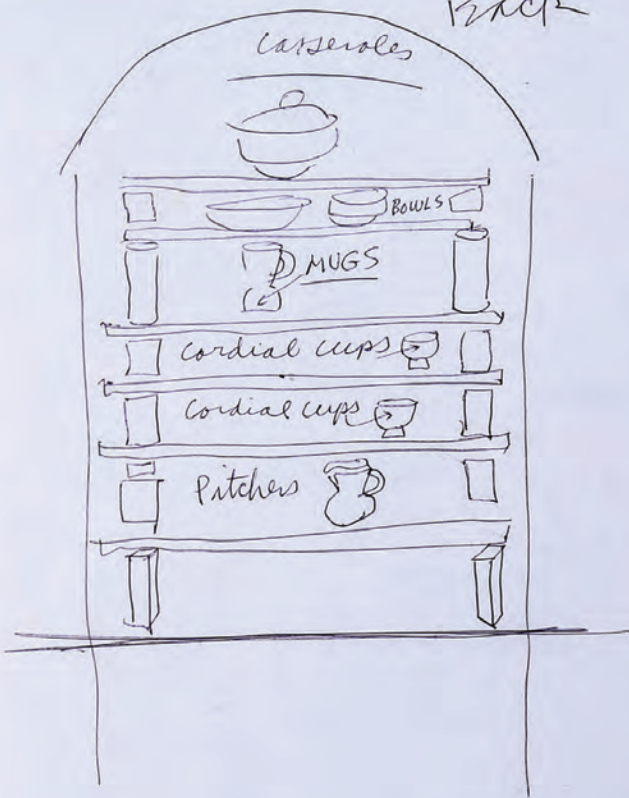




See Poem - the Chinese classic lemma as "The Poem of Rite" contains a famous description of a zither on which "one string is plucked, and three others will reverberate in murmurs so there is a lingering sound". This quality of YIYIN "lingering sound" has been used by Chinese scholars and critics for centuries to praise a certain "evanescence of suggestive quality, in a poem, painting or other work of art. That is, a work of apparent simplicity, that carries within it enormous resonances and reserves of feeling. The subtlety of YIYIN (YIYIN), needless to say, is difficult to describe to someone who doesn't perceive it intuitively, one might even say its analogous to the quality of poetry Robert Frost claimed is lost in translation!"

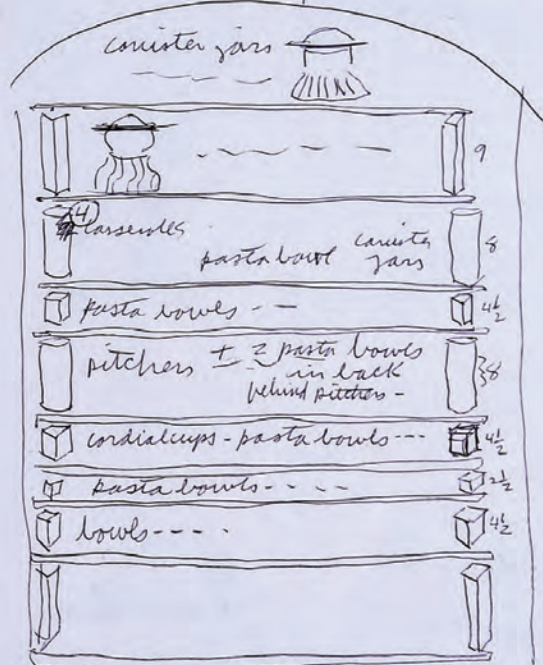


Back



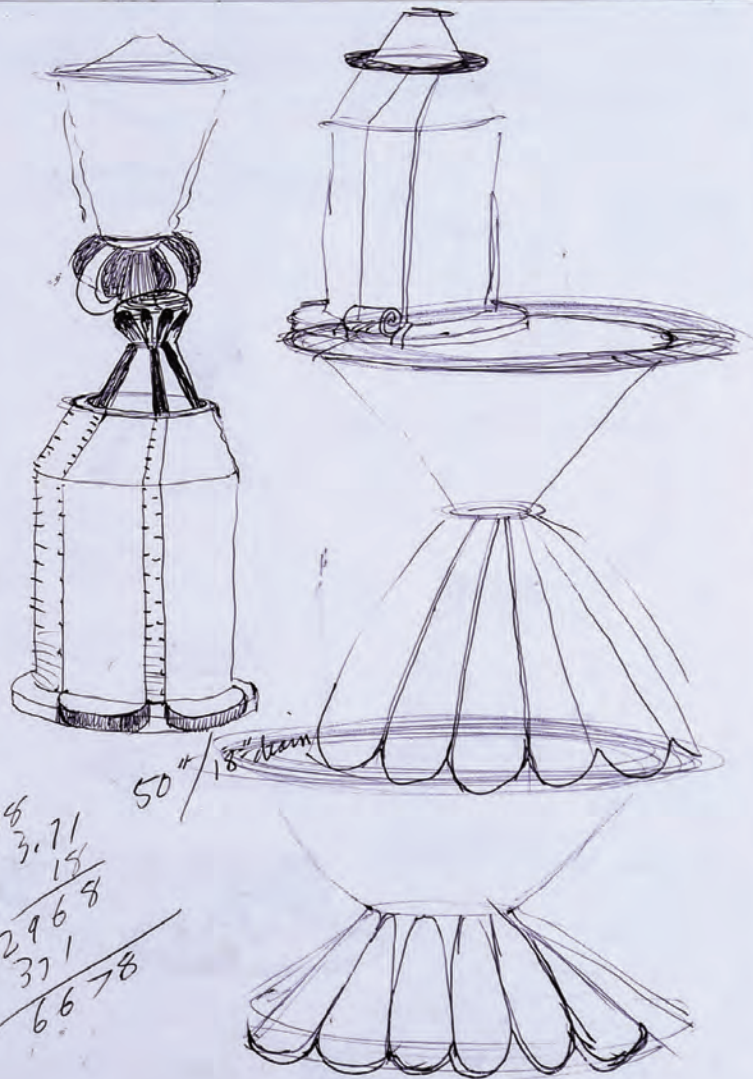
5/19/2010

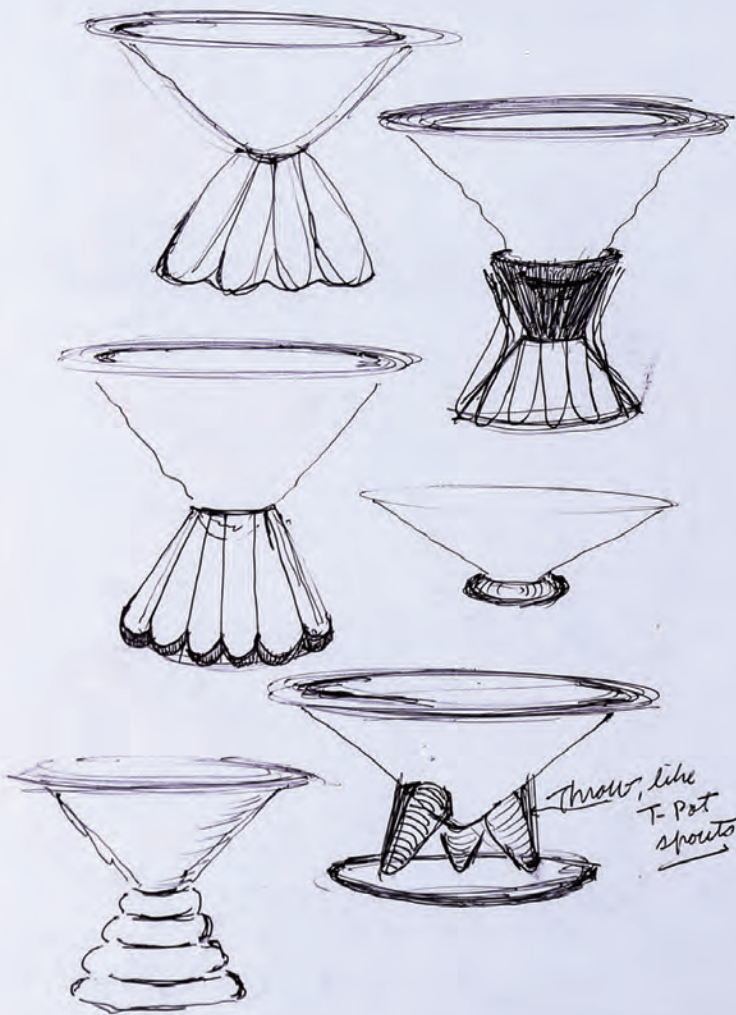
front



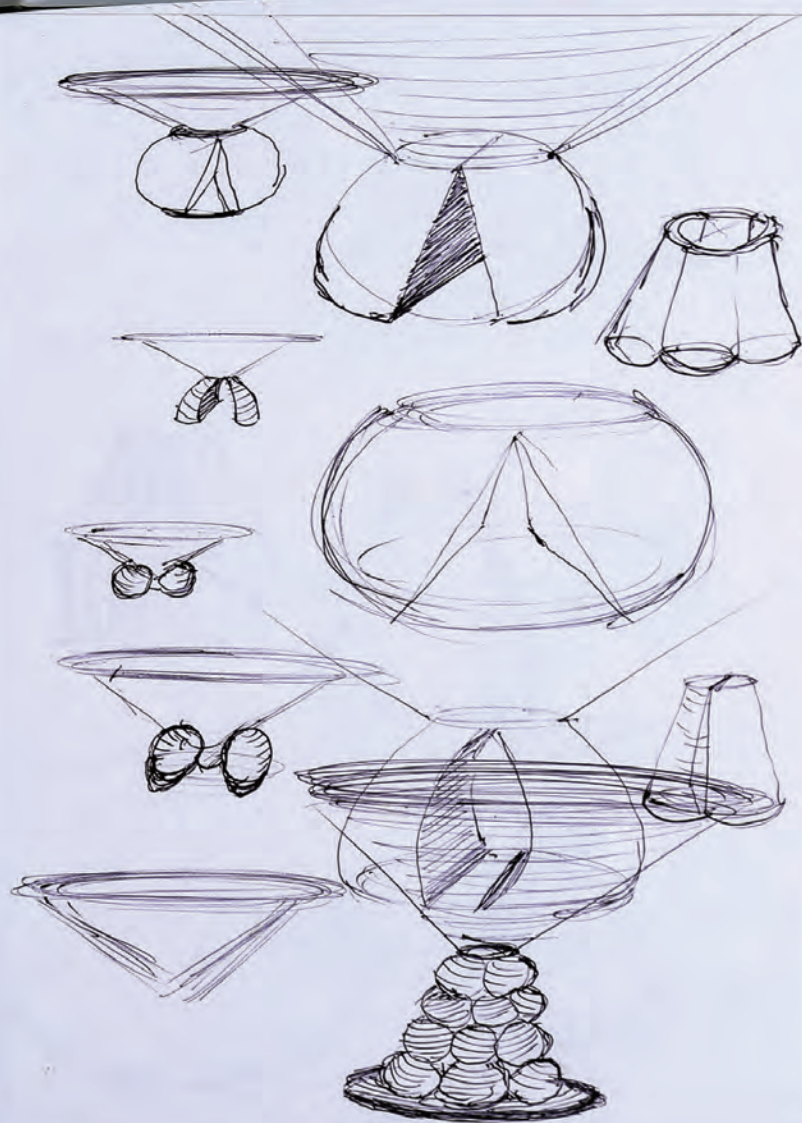
Bowls - 16	approx. 100 ea.	1600
Canister jars - 15	approx. 300 ea.	4500
Sm. Pitchers - 19	approx. 125 ea.	2375
Casseroles - 13	approx. 350 ea.	4550
Cordial cups - 50	approx. 40 ea.	2000
Pasta Bowls - 16	approx. 175 ea.	2800
Tall mugs - 31	approx. 90 ea.	2790
		<u>20,615</u>

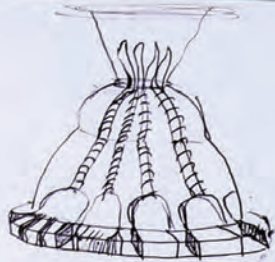
160





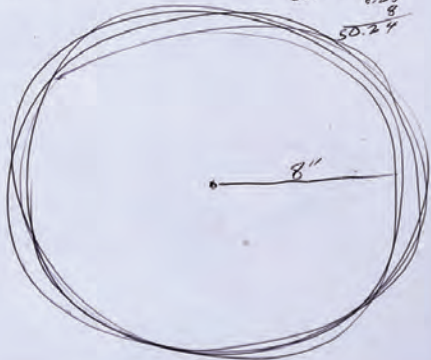
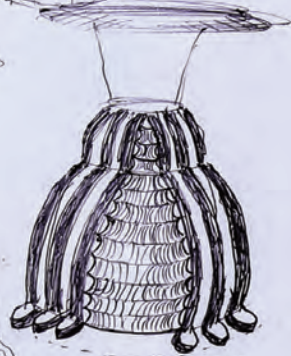
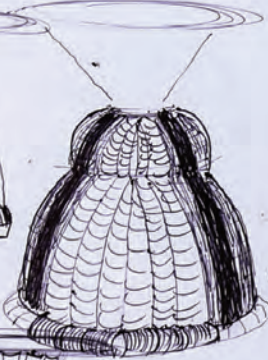
throw, like
T-Pot
spouts



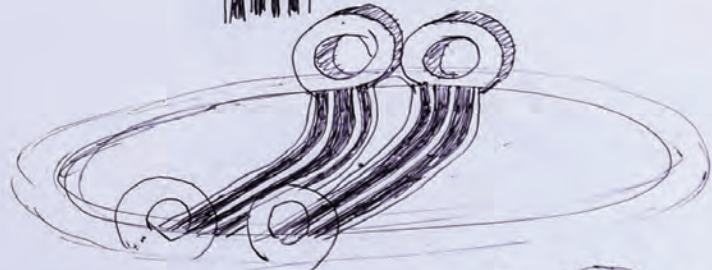
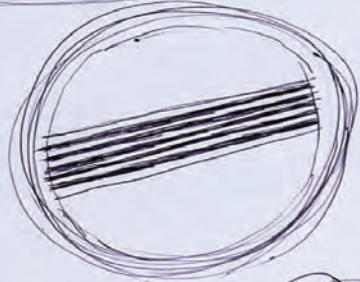


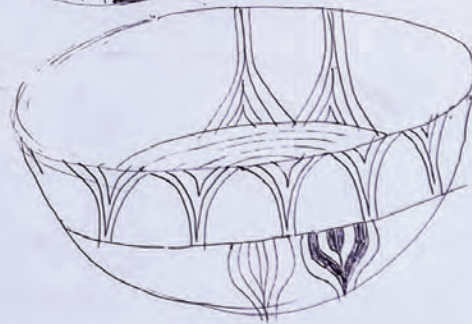
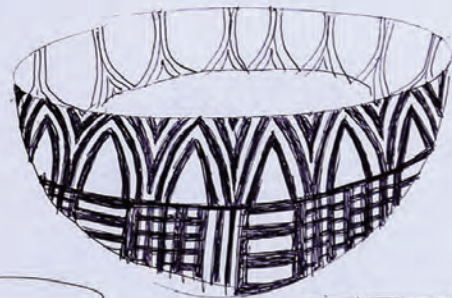
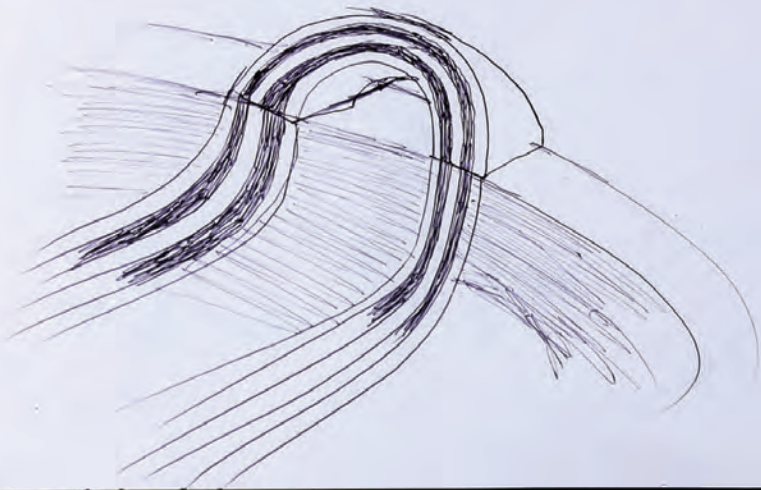
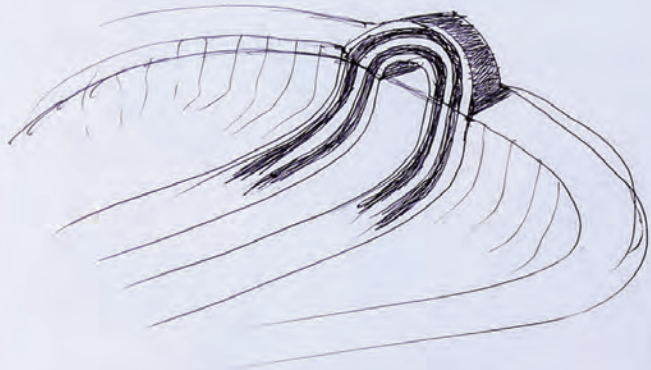
4

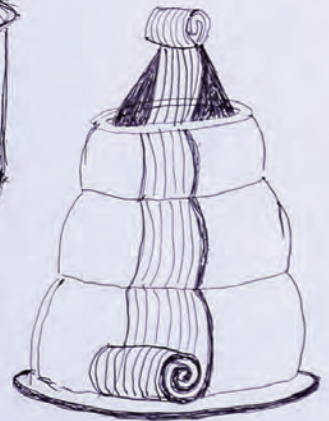
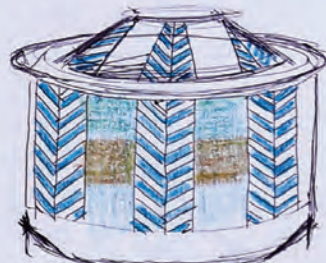
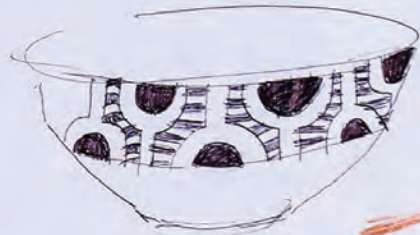
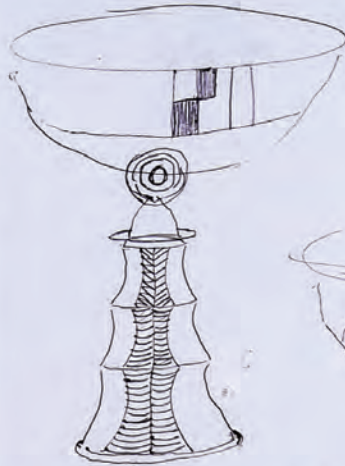
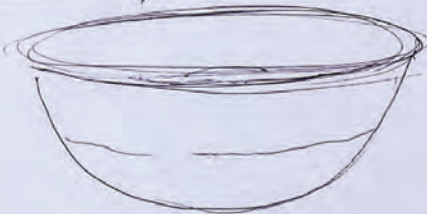
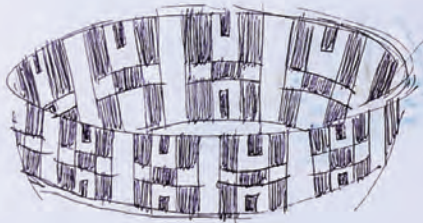
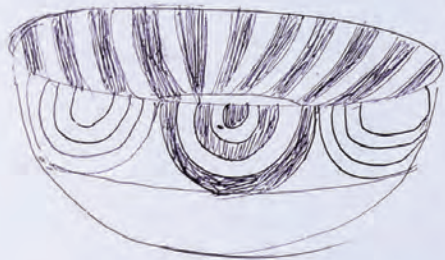
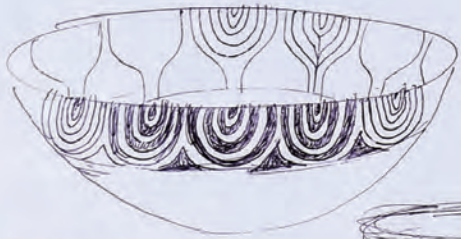
20" circle - 64" coil

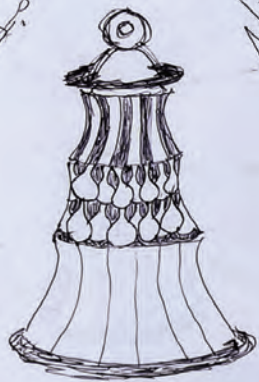
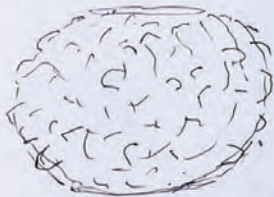
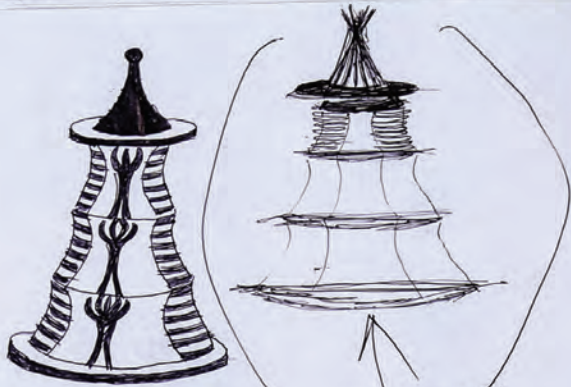


3.14
8
25.12 6.28
8
50.24

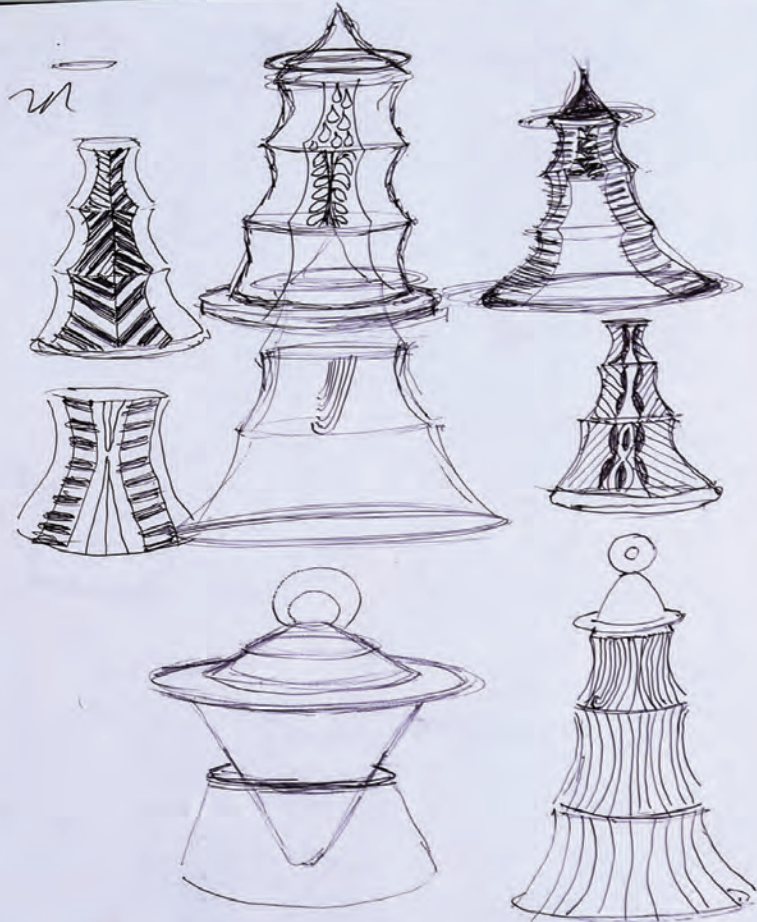


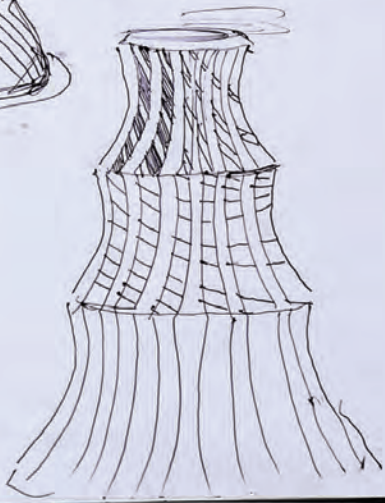
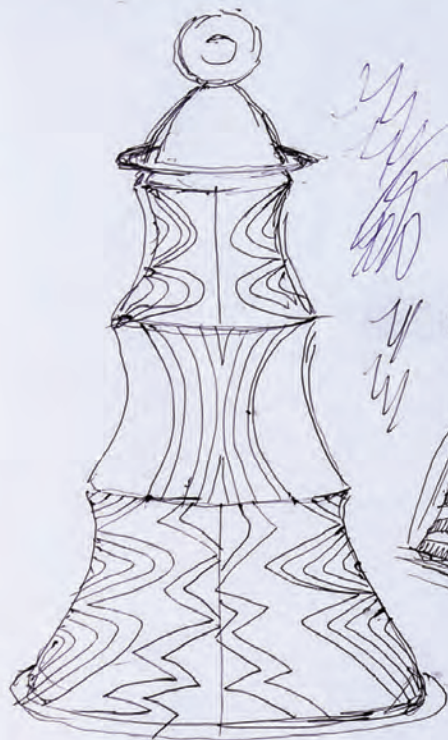




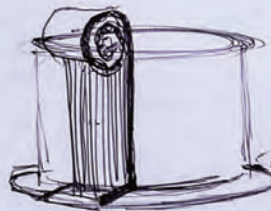
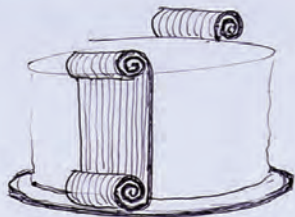


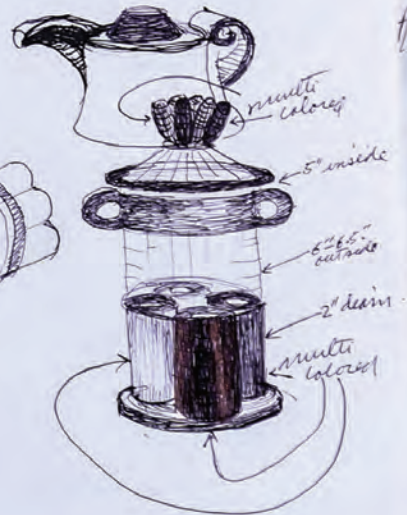
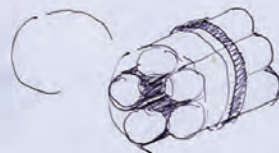
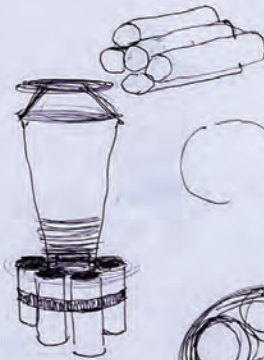
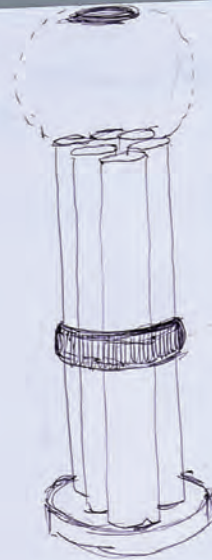
This one...

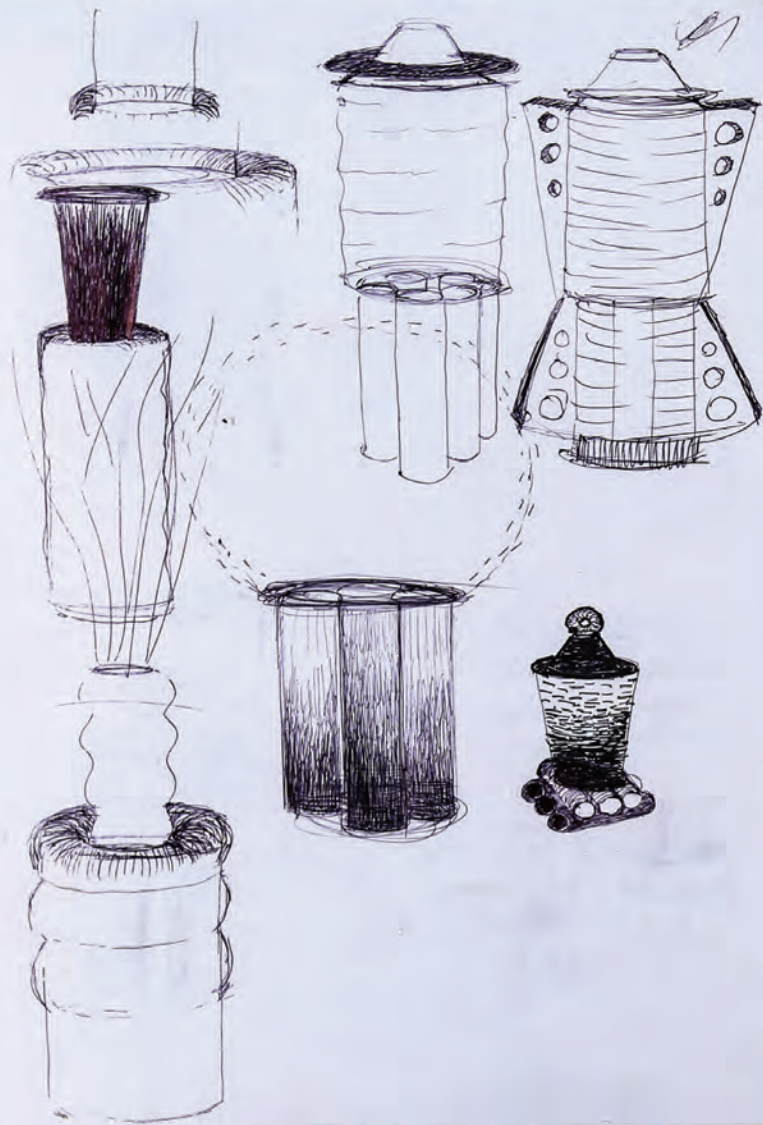


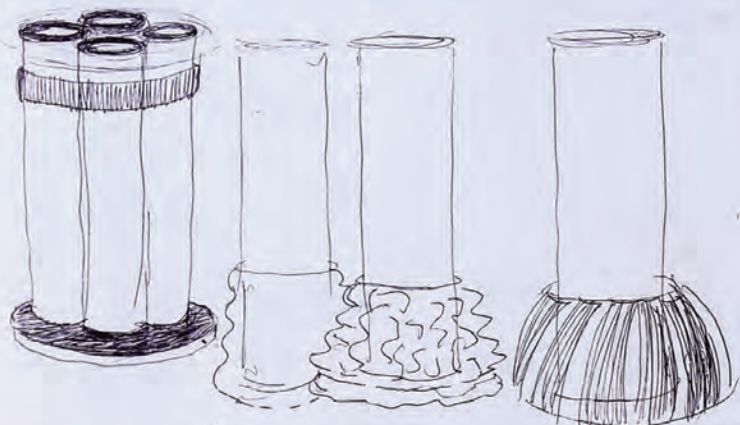


Elaine
413-522-0433
Clay Workshop

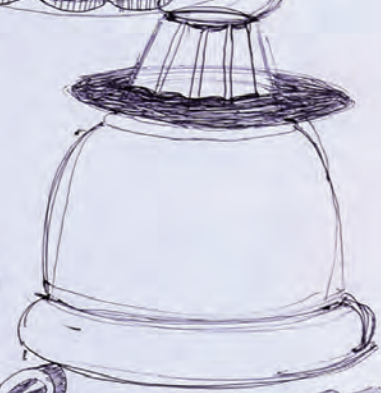
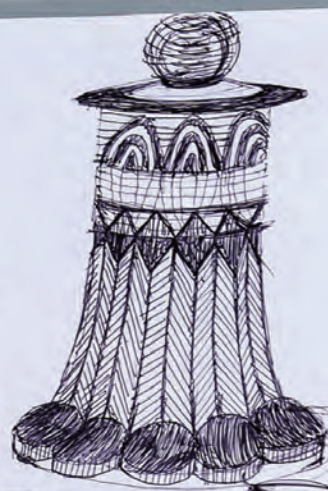
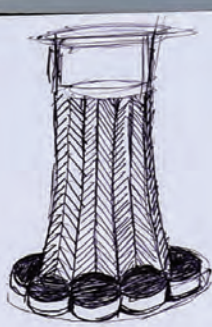
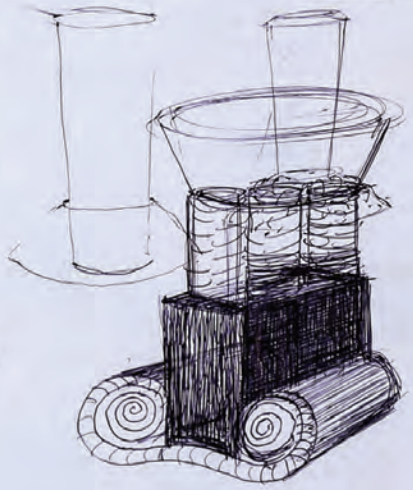


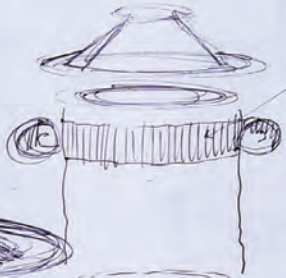
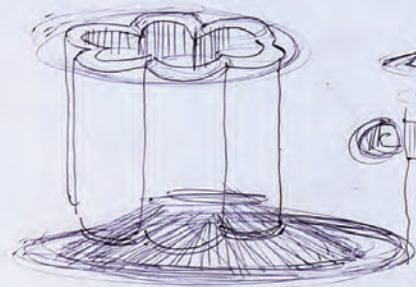






7/15/00

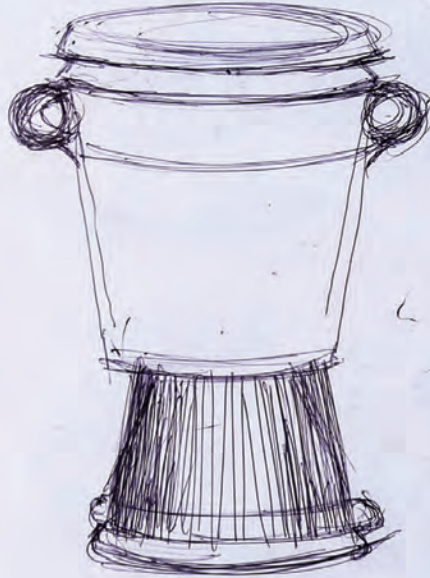


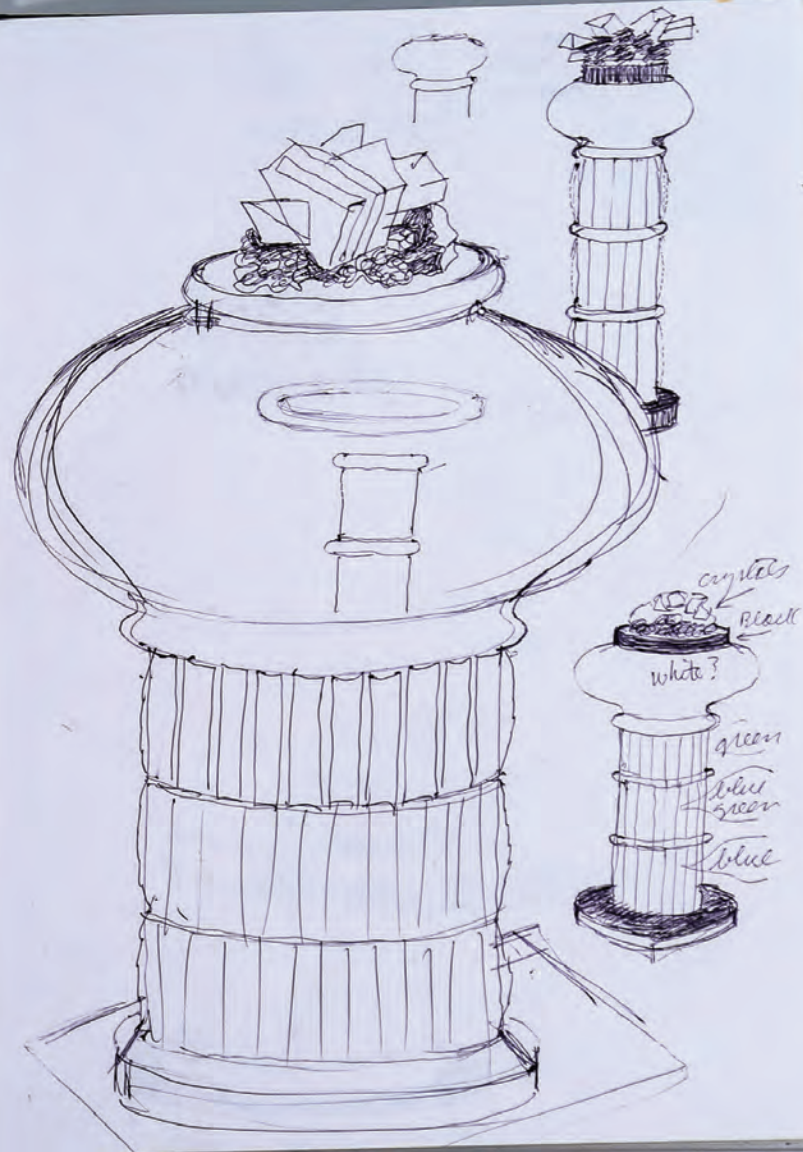
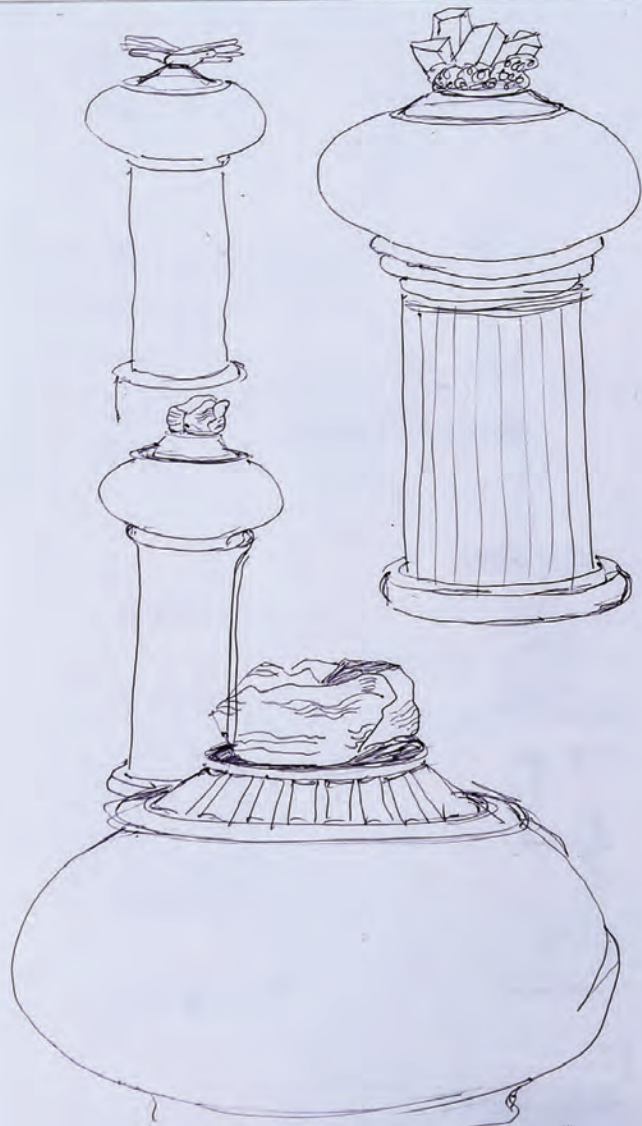


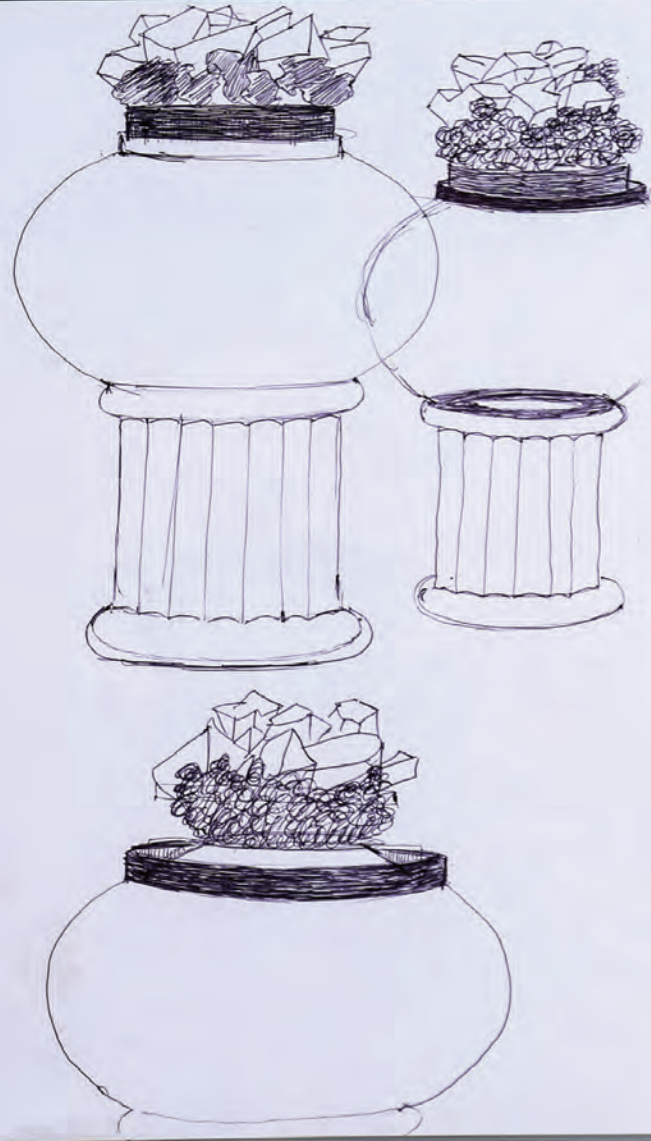
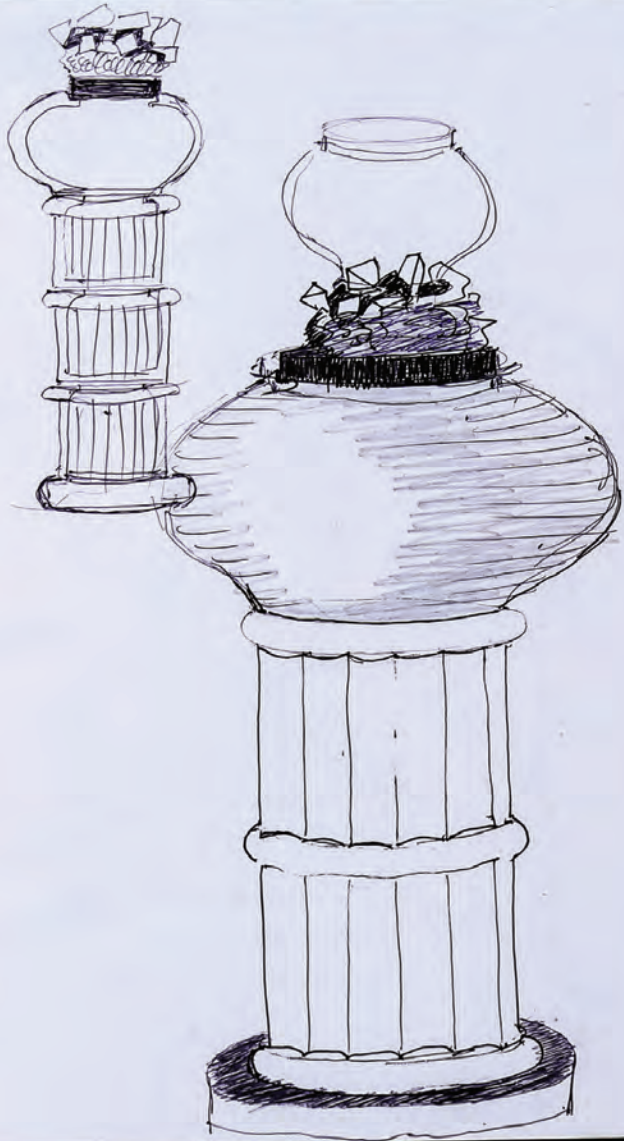
Slip?
Tertium?



Festum

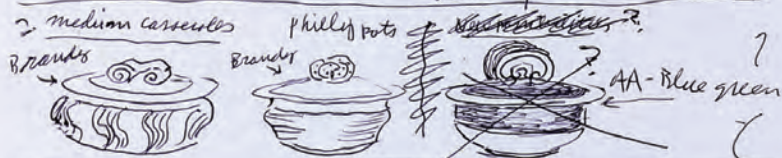
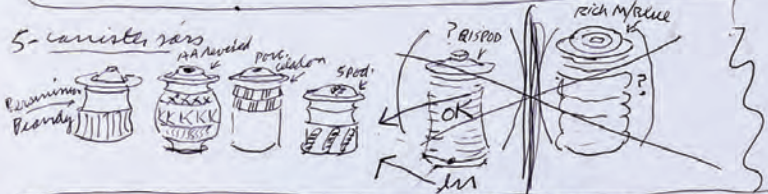




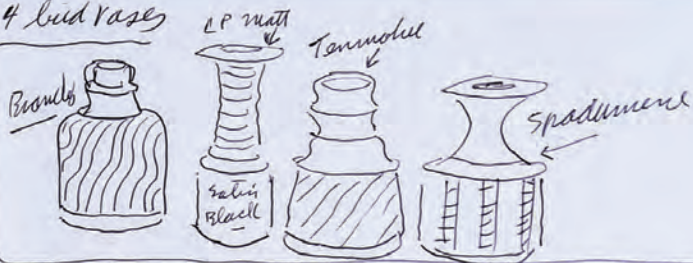




Possible pots for Show @ Huntington Museum - opens 8/27/11
 " WVA.



4 Laid Vases



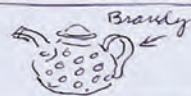
2 Serving Bowls



1 medium platter



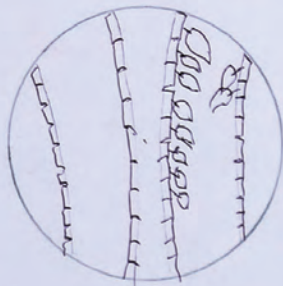
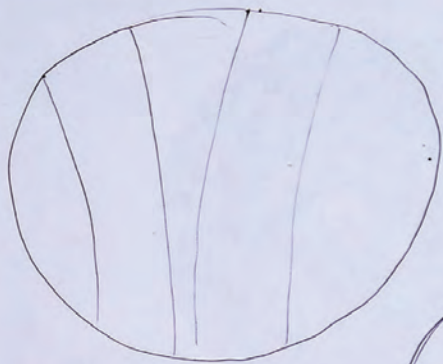
1 Teapot

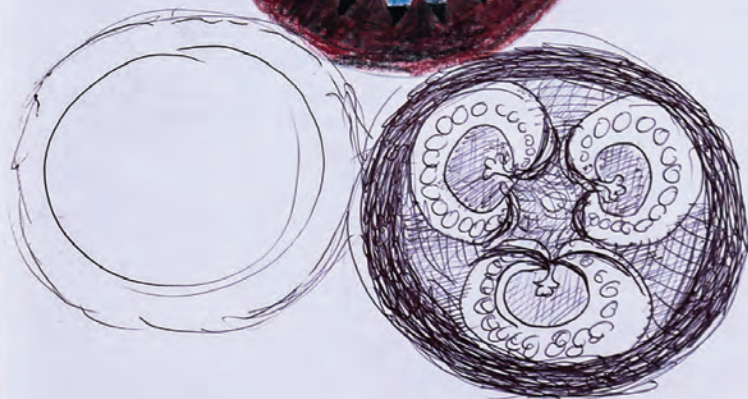
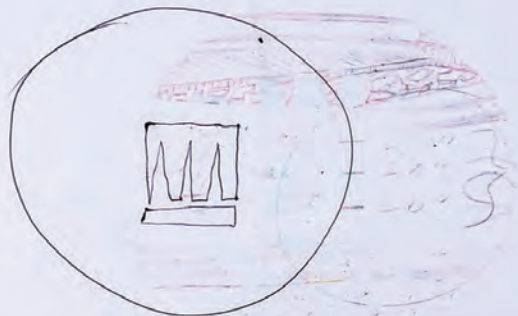


34 pots up to here!

4 Four sm. porcelain/celadon flat plate/bowls







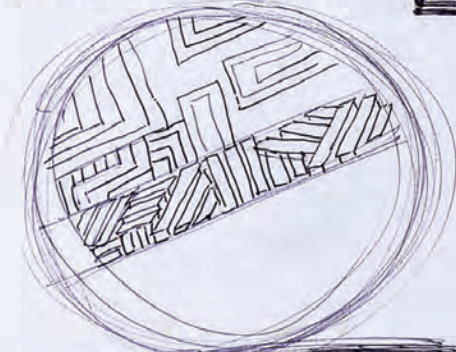
wet



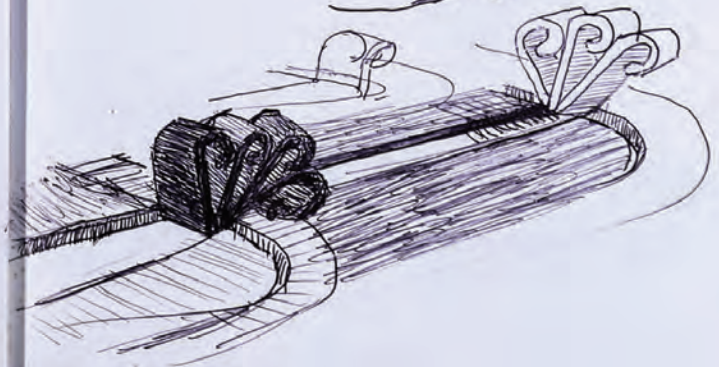
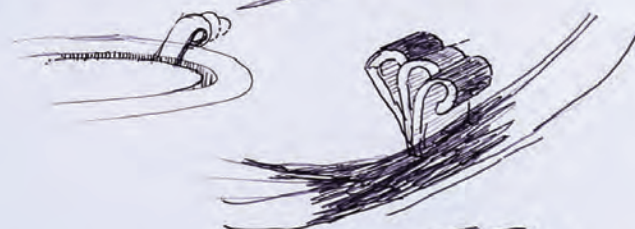
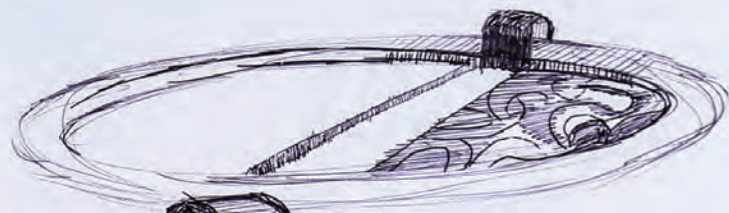
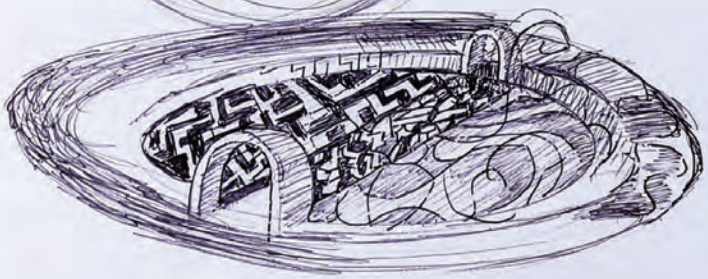
Wet diam of top of tray - 24"
" " of base of tray - 20"
" " " bottom plate - 20" } wet sizes

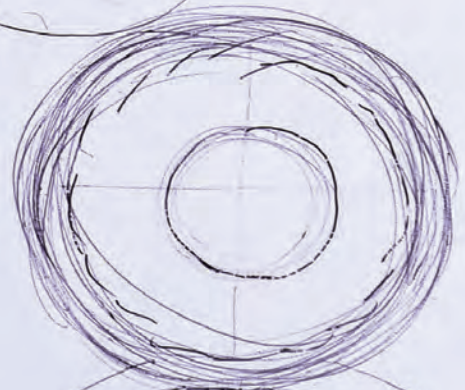
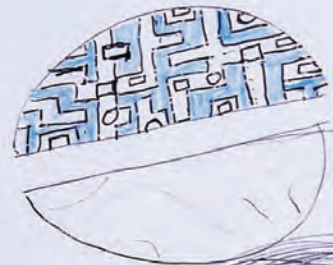
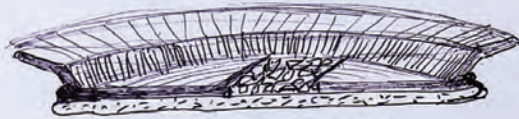
Fixed sizes
20 20.00
1.20 1.20
18.80
18.80

Top of tray --- 20"
Top of base of tray - 17 +
Base plate --- 17 +



19 19.00
.13 2.47
57 76.53
19
2.47





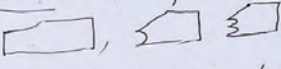
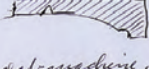





1) ^{wheel throw} Straight plates - different shapes & rim & feet
 dinner - lunch - breakfast - desert - buffet


2) throw - round ○, oval ○, square □
cut it, add rims

3) Combinations - wheel / slab / coil / pressed, in rover

4) tools -  

5) Slab plates - make slabs - hand, slab machine,

6) Coiled plates 

7) Concave plates 

8) Pressed into or over - whatever!!

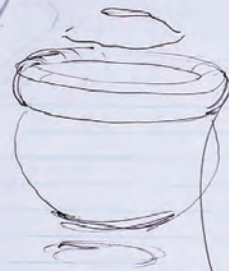
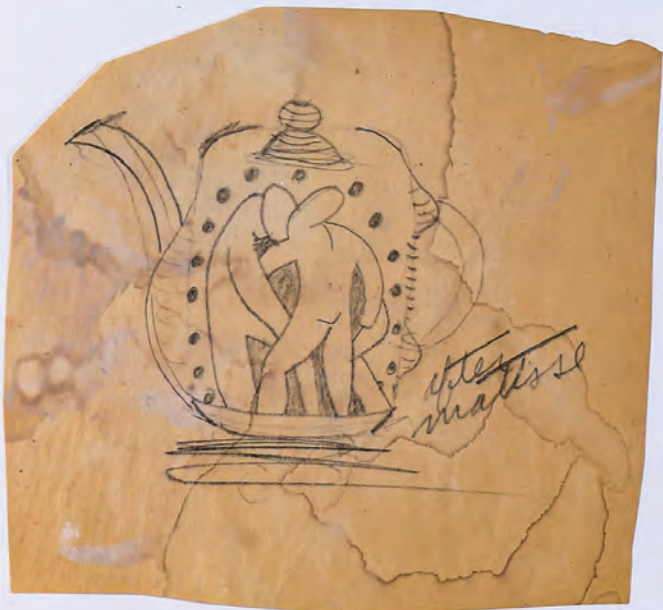


check on
diya lamps



I
LOVE
YOU
ASTRAEA !!

A decorative border surrounds the text, consisting of a large, irregular cloud-like shape with wavy edges. Several five-pointed stars are scattered around the text and the border.



*tin
Lemo.*



large tray





ENTRANCE HALL (SIR ARTHUR EVANS' RECONSTRUCTION)—

